

HYUNDAI DIESEL ENGINE





Contents ▶

02 | COMPANY INTRODUCTION

04 | COMPANY Certification status

HYUNDAI MACHINERY PRODUCTS

05 | H6D8&9 Series

06 | H6D2 Series

07 | H4D Series

08 | HYUNDAI LAND DIESEL GENERATOR

09 | HYUNDAI MARINE DIESEL GENERATOR

10 | HYUNDAI GENERATOR DIESEL ENGINE

11 | HYUNDAI INDUSTRIAL DIESEL ENGINE

COMPANY INTRODUCTION

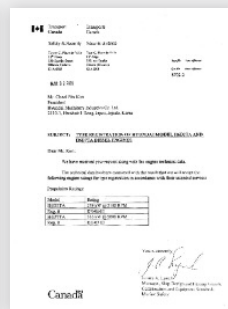
was established for a Manufacturer of marine diesel engines to provide the best reliability, power & performance with care for the environment & welcome economy in order to cope with the ever-changing Market demand for high quality. We, as a supplier of diesel engines, are now well positioned to meet the requirements of all users. For all your needs for marine diesel engines and gen-sets for al nd & marine application, please look to HYUNDAI machinery and discover the advantages of diesel engines offer.

We are trying to be a world-class manufacturer for marine & industrial diesel engines. So far, we have been exporting our engines to whole over the world.

COMPANY

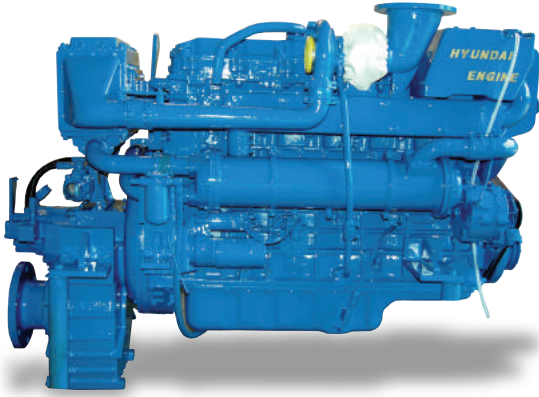
Certification status

- Acquired ISO 9001 quality certification system (From KMAQA)
- Acquired GQ mark (From Korean Government)
- Acquired ISO 14001 certification for environmental issues
- Registered supplier to the government projects
- Approved by Korea Institute of Ship Safety & Technology
- Designated as a promising company from Korea Credit Guarantee Fund
- Awarded official commendation from the Ministry of Commerce, Industry and Energy
- Awarded official commendation from the Ministry of Maritime Affairs & Fisheries
- Designated as a promising company from The Export-Import Bank of Korea
- Selected as a successful business man from Government
- Selected as a enterprise technical reform development business
- Awarded an official commendation in Korea Technical innovation review forum
- Awarded a citation for 5 million dollars export record by president
- Passed for the Endurance Test of JG (From Japan Government) and Acquired Drawing approval
- Awarded official commendation from the Ministry of Commerce, Industry and Energy (Fifth in-notice show SEOUL, 2004)
- Received a plague of appreciation from Governor of Jeju. (In the 3rd World Korean Business Convention)
- Awarded an official commendation from Jeju Citizen's Coalition for Economic Justice
- Awarded Jeju small and midium business prize (By administrator of Small Business Administration)
- Awarded official commendation from the Prime Minister
- Awarded small and medium business prize (In the field of export increasing)
- Awarded Inno-Biz Company from Government
- Designated Venture Company from Government
- Designated as KOTRA SEAL OF EXCELLENCE from Government



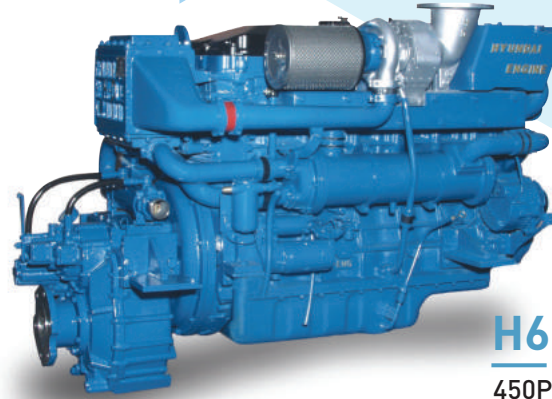
HYUNDAI MARINE DIESEL ENGINE

H6D8&9 Series



H6D9TA

500PS×2000RPM
550PS×2100RPM

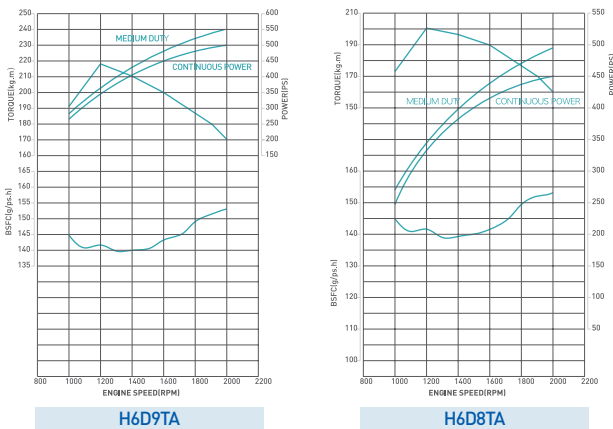


H6D8TA

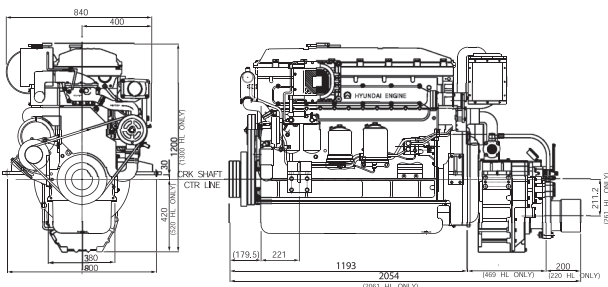
450PS×2000RPM
490PS×2100RPM

- **High Economical**
EUI system 을 적용하여 완전연소 실현 , 고출력 · 최저연비 실현
- **High Technology**
최첨단 신기술의 결정체
- **Pollution Free**
NOx 등 공해물질은 IMO 및 국내 · 외 환경규정을 만족시키는 친환경 무공해 엔진
- **Compact Design**
인젝션 펌프가 없는 심플한 구조의 엔진
- **High Performance**
전자제어 채택으로 최상의 상태에서 완전연소로 최강의 출력
- **Best Operation**
자기진단 시스템 채택으로 최고의 안전운전 실현

Performance Curve / Courbe Des Caracteristiques



Dimensions / 엔진치수 (mm)

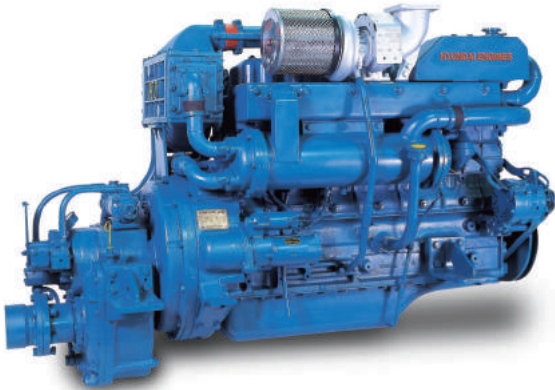


Specification / 엔진사양

SPEC / 사양	MODEL / 기종	H6D8TA	H6D9TA
ENGINE TYPE / 엔진형식	4CYCLE, INLINE, FRESH-WATER COOLED DIESEL ENGINE 4행정 직렬, 청수냉각 디젤엔진		
CONTINUOUS POWER (PS×RPM) 연속출력×회전수		450 x 2000	500 x 2000
MEDIUM DUTY (PS×RPM)		490 x 2100	550 x 2100
NUMBER OF CYLINDER / 실린더 수		6	
BORE×STROKE (mm) 실린더 내경×행정		130 × 155 mm	
TOTAL DISPLACEMENT (cc) / 배기량		12,344cc	
ASPIRATION / 흡기 방식		T/C with I/C	
FUEL INJECTION TYPE / 연료분사 방식		DELPHI EUI (ELECTRONIC UNIT INJECTION)	
COMPRESSION RATIO / 압축비		17.2 : 1	
FUEL OIL / 연료유		DIESEL LIGHT OIL / 경유	
LUBRICATING OIL / 윤활유		API CLASSIFICATION "CI-4", SAE 10W40	
COOLING SYSTEM / 냉각 방식		HEAT EXCHANGER TYPE FORCED CIRCULATING CENTRIFUGAL PUMP 원심펌프로 청수 강제순환 냉각	
LUBRICATING SYSTEM / 윤활 방식		FORCED FEED WITH OIL PUMP	
STARTING SYSTEM / 시동 방식		DC 24VOLT ELECTRIC MOTOR / 직류 24V 전기시동	
FUEL CONSUMPTION (g/ps.h) 연료소모율		150	152
ROTATING DIRECTION / 회전 방향		CLOCK WISE VIEWED FROM BOW / 선수에서 보아 시계 방향	
STANDARD REDUCTION GEAR RATIO 표준 감속비		1.83, 2.09, 2.51, 3.08, 3.43, 4.04, 4.48	
DRY WEIGHT WITH GEAR BOX (kg) 엔진 무게(감속기 포함)		1,565kg	

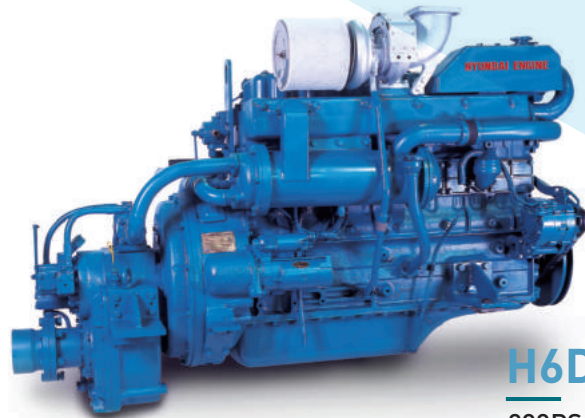
HYUNDAI MARINE DIESEL ENGINE

H6D2 Series



H6D2TA

325PS×2100RPM
360PS×2200RPM

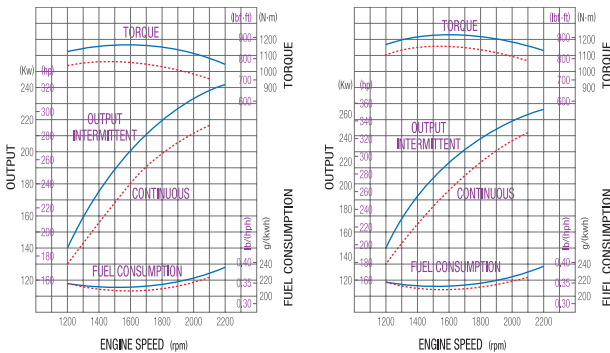


H6D2T2

283PS×2000RPM
320PS×2100RPM

- **High Quality**
최고의 품질
- **High Performance**
최대, 최강의 출력
- **High Technology**
최고의 기술력
- **High Reliability**
최고의 봉사료 최상의 신뢰감
- **Low Fuel Consumption**
적은 연료 소비량
- **Easy and Economical Maintenance**
경제적이고 쉬운 정비

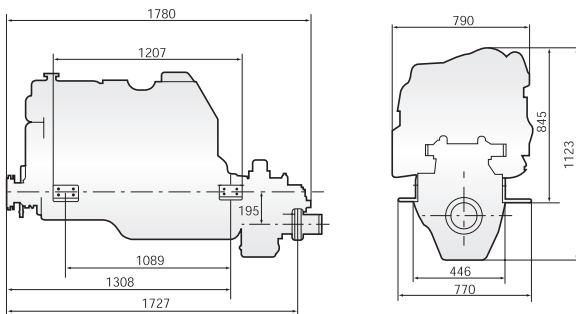
Performance Curve / Courbe Des Caracteristiques



H6D2T2

H6D2TA

Dimensions / 엔진치수 (mm)

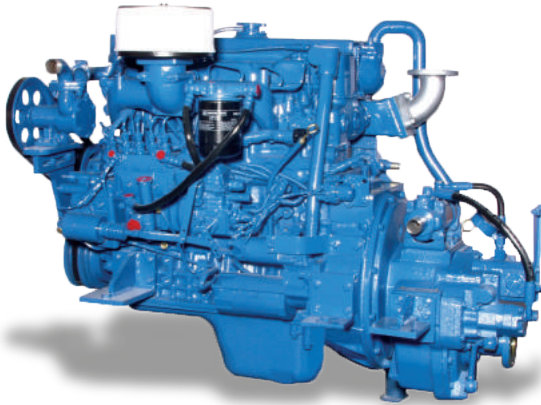


Specification / 엔진사양

SPEC / 사양	MODEL / 기종	H6D2T2	H6D2TA
ENGINE TYPE / 엔진형식		4CYCLE, INLINE, FRESH-WATER COOLED DIESEL ENGINE 4행정 직렬, 청수냉각 디젤엔진	
CONTINUOUS POWER (PS×RPM) 연속출력×회전수		283×2,000	325×2,100
MEDIUM DUTY (PS×RPM)		320×2,100	360×2,200
NUMBER OF CYLINDER / 실린더 수		6	
BORE×STROKE (mm) / 실린더 내경×행정		130×140mm	
TOTAL DISPLACEMENT (cc) / 배기량		11,149cc	
ASPIRATION / 흡기 방식		TC / 터보차저 강제급기	TCI / 터보차저 인터쿨러
COMBUSTION TYPE / 연소 방식		DIRECT INJECTION / 직접 분사식	
COMPRESSION RATIO / 압축비		16	15.5
FIRING ORDER / 폭발순서		1-5-3-6-2-4	
VALVE CLEARANCE (mm) 밸브 타펫트 간극		INTAKE 0.4 EXHAUST 0.6	
FUEL OIL / 연료유		DIESEL LIGHT OIL / 경유	
LUBRICATING OIL / 윤활유		API CD CLASS / 미국 자동차 규격 CD급	
COOLING SYSTEM / 냉각 방식		HEAT EXCHANGER TYPE FORCED CIRCULATING CENTRIFUGAL PUMP 원심펌프로 청수 강제순환 냉각	
STARTING SYSTEM / 시동 방식		DC 24VOLT ELECTRIC MOTOR / 직류 24v 전기시동	
FUEL INJECTION PUMP AND GOVERNOR 연료 펌프 가버너		BOSCH TYPE WITH ALL SPEED CONTROL / 보쉬형 전속도 제어	
ROTATING DIREC- TION 회전 방향	ENGINE / 엔진	CLOCK WISE VIEWED FROM BOW / 선수에서 보아 시계 방향	
	PROPELLER 스크류	CLOCK WISE VIEWED FROM STERN / 선미에서 보아 시계 방향	
STANDARD REDUCTION GEAR RATIO 표준 감속비		1.97, 2.23, 2.54, 2.76, 3.04, 3.41	
DRY WEIGHT WITH GEAR BOX (kg) 엔진 무게(감속기 포함)		1,180	1,218

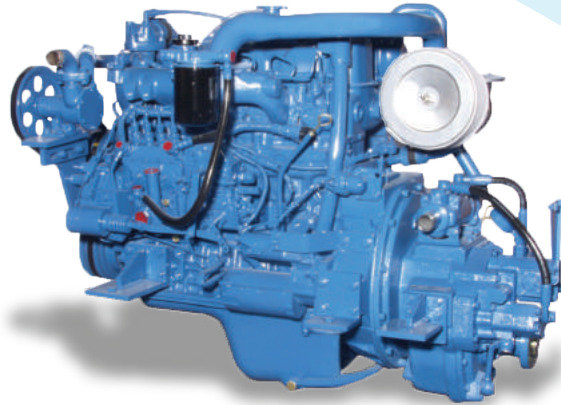
HYUNDAI MARINE DIESEL ENGINE

H4D Series



H4D

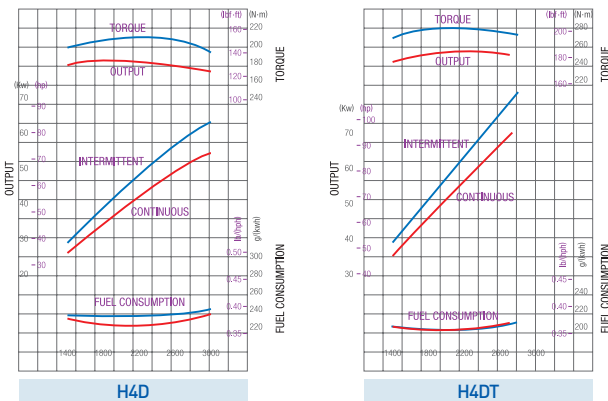
68PS×2700RPM
80PS×2800RPM



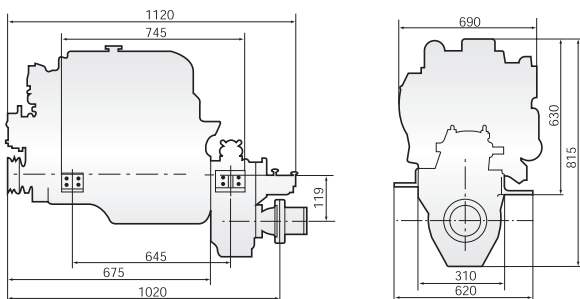
H4DT

94PS×2700RPM
110PS×2800RPM

Performance Curve / Courbe Des Caracteristiques



Dimensions / 엔진치수 (mm)



Specification / 엔진사양

SPEC / 사양	MODEL / 기종	H4D	H4DT
ENGINE TYPE / 엔진형식		4CYCLE, INLINE, FRESHWATER COOLED DIESEL ENGINE 4행정 직렬, 청수냉각 디젤엔진	
CONTINUOUS POWER (PS×RPM) 연속출력×회전수		68×2,700	94×2,700
MEDIUM DUTY (PS×RPM)		89×2,800	110×2,800
NUMBER OF CYLINDER / 실린더 수		4	
BORE×STROKE (mm) / 실린더 내경×행정		100×105mm	
TOTAL DISPLACEMENT (cc) / 배기량		3,298cc	
ASPIRATION / 흡기 방식		NA / 자연흡입	TC / 터보차저 강제급기
COMBUSTION TYPE / 연소 방식		DIRECT INJECTION / 직접 분사식	
COMPRESSION RATIO / 압축비		17.5	16
FIRING ORDER / 폭발순서		1-3-4-2	
VALVE CLEARANCE (mm) 밸브 틈새 간격		INTAKE 0.4 EXHAUST 0.4	
FUEL OIL / 연료유		DIESEL LIGHT OIL / 경유	
LUBRICATING OIL / 윤활유		API CD CLASS / 미국 자동차 규격 CD급	
COOLING SYSTEM / 냉각 방식		HEAT EXCHANGER TYPE FORCED CIRCULATING CENTRIFUGAL PUMP 원심펌프로 청수 강제순환 냉각	
STARTING SYSTEM / 시동 방식		DC 24VOLT ELECTRIC MOTOR / 직류 24V 전기사동	
FUEL INJECTION PUMP AND GOVERNOR 연료 펌프, 가버너		BOSCH TYPE WITH ALL SPEED CONTROL / 보쉬형 전속도 제어	
ROTATING DIRECTION 회전 방향	ENGINE / 엔진 PROPELLER 스크류	CLOCK WISE VIEWED FROM BOW / 선수에서 보아 시계 방향 CLOCK WISE VIEWED FROM STERN / 선미에서 보아 시계 방향	
STANDARD REDUCTION GEAR RATIO 표준 감속비		1.64 2.07 2.52 2.96 3.32	
DRY WEIGHT WITH GEAR BOX (kg) 엔진 무게(감속기 포함)		430	445