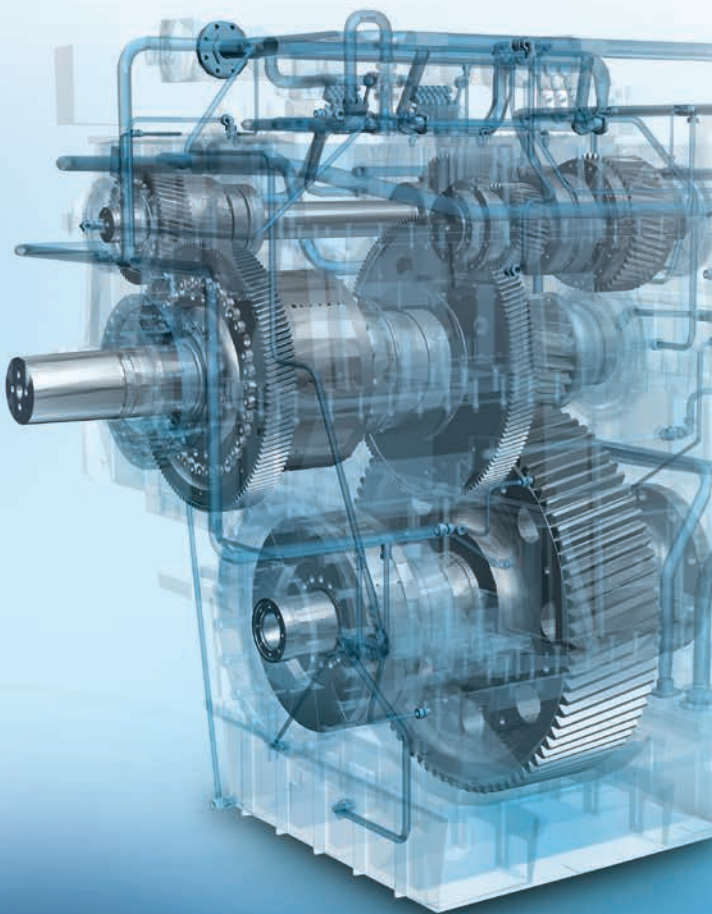




REINTJES
POWER TRAIN SOLUTIONS



Product Guide

Index

Table of Contents

Type Selection and Typical Marine Applications	4 – 5	Large Gearboxes	116 – 201
Important Notes	6	WAF 2346 – 7760 (Continuous Duty)	
Marine Duty Cycle Classifications	7	WGF/LGF 2346 – 7760 (Continuous Duty)	
Small Gearboxes	8 – 59	WGV 502 – 1100 (Continuous Duty)	
WAF/LAF 164 – 572 (Pleasure Duty)		LAF 2346 – 7760 (Continuous Duty)	
WVS/WLS 234 – 430 (Pleasure Duty)		VA 2451 – 4945 (Continuous Duty)	
VLJ 430 (Pleasure Duty)		SVA 630 – 1250 (Continuous Duty)	
WAF/LAF 164 – 572 (Light Duty)		SVAL 850 – 1250 (Continuous Duty)	
WVS/WLS 234 – 430 (Light Duty)		DLG 1113 – 110131 (Continuous Duty)	
VLJ 430 (Light Duty)		RTG 500 – 800 for turbines (Continuous Duty)	
WAF/LAF 164 – 572 (Medium Duty)		VLJ 4431 – 7541 (Continuous Duty)	
WVS/WLS 234 – 430 (Medium Duty)		Specials	202 – 215
VLJ 430 (Medium Duty)		RPDF 1000 – 7000 (FORTJES®) (Pleasure Duty)	
ZWVS 440 (Medium Duty)		WAF/LAF 344 – 572 RHS (Hybrid System) (Pleasure Duty)	
WAF 164L – 572L (Continuous Duty)		WAF/LAF 665 – 1143 RHS (Hybrid System) (Continuous Duty)	
WAF/LAF 164 – 572 (Continuous Duty)		WVS/WLS 730 – 930 RHS (Hybrid System) (Pleasure Duty)	
WGF/LGF 562 (Continuous Duty)		RDG/RDGL for dredging pump (Continuous Duty)	
Medium-sized Gearboxes	60 – 115	Service	216 – 219
WAF/LAF 665 – 1973 (Continuous Duty)		Service Core Business	
WAF/LAF 665L – 1973L (Continuous Duty)		Contract Manufacturing	
WGF/LGF 665 – 1973 (Continuous Duty)			
WGV 482 (Continuous Duty)			
WVS/WLS 730/1L – 1130L (Pleasure Duty)			
WVS/WLS 730/1 – 2240 (Pleasure Duty)			
VLJ 730/1 – 930/1 (Pleasure Duty)			
WVS/WLS 730/1L – 1130L (Light Duty)			
WVS/WLS 730/1 – 2240 (Light Duty)			
VLJ 730/1 – 930/1 (Light Duty)			
WVS/WLS 730/1L – 1130L (Medium Duty)			
WVS/WLS 730/1 – 2240 (Medium Duty)			
VLJ 730/1 – 930/1 (Medium Duty)			
VLJ 1130 – 2230 (Continuous Duty)			

This document and the technical data contained herein are subject to technical modifications and are non-binding. The data serve informational purposes and cannot be guaranteed in any way. In addition, our gearboxes will be assessed and determined individually for each project. This is necessary due to differing characteristics of each project like specific site and operational conditions. If this document is delivered in another language than English and in case of divergences of interpretation between the different language texts, the English text shall prevail.

Gearbox standard design dry. Following lists only show an extract of gearboxes available. Additional sizes, offset configurations and variations are available on request.



Type Selection

Marine Propulsion Systems

Reverse reduction gearbox with clutch

- WVS
- WVS/U
- WAF
- WGV (coaxial)
- WGF (partly vertical offset)

Reduction gearbox with clutch

- WLS
- WLS/U
- VLJ
- LAF
- LGF
- SVAL (slide bearings)

Reduction gearbox without clutch

- AF
- VA
- SVA (slide bearings)

Reverse reduction two-speed-gearbox with clutch

- ZWVS
- ZWAF

Reduction two-speed-gearbox with clutch

- ZLAF (roller bearings)
- ZSVAL (slide bearings)

Special Propulsion Systems

Twin input/single output reduction gearbox with hydraulically operated clutches

- DLG
- DLGF

Twin input/single output reduction gearbox without clutch

- DUG

Non-steerable pod with counter rotating propellers and integrated reverse reduction gearbox with hydraulically operated clutches (FORTJES®)

- RPD
- RPDF

Reverse reduction gearbox with hydraulically operated clutches, electric motor, elastic coupling and frequency converter (Hybrid System)

- RHS

Special Gearboxes

Reduction gearbox with or without clutch for dredging pump

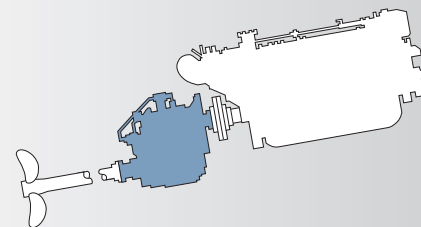
- RDG
- RDGL

Parallel shaft high-speed gearbox for turbines

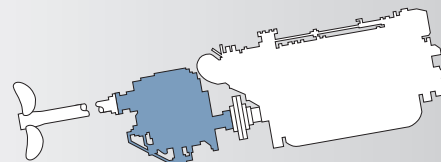
- RTG

Typical Marine Applications

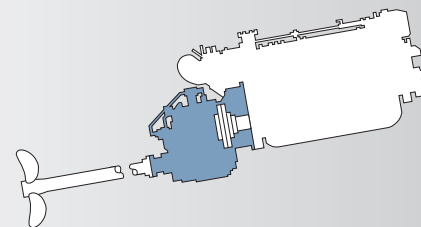
Free-standing



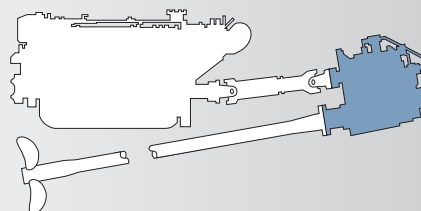
UEK (output shaft above input shaft)



Flange-mounted



U-drive (WVS/WLS only)



Important Notes

REINTJES Marine Gearboxes

Warranty

The marine gearboxes are subject to the standard REINTJES warranty conditions. Modifications of the gearbox are only permissible in consultation with REINTJES.

Torsional responsibility

The torsional couplings are selected according to engine torque. In the event that different couplings are required as a result of the torsional vibration calculation, the costs for this change will be for the purchaser's account. Torsional vibration analysis can be made by the engine builders, independent consultants etc. The responsibility for ensuring torsional compatibility of the propulsion system rests with the assembler of the equipment. REINTJES cannot be held liable for damages due to inadmissible high alternating moments on the units supplied by us. These will disengage us from any warranty agreement.

Ratings

Ratings are for diesel engines only, at the rated speeds. The models, ratings, text, and data contained in this publication are subject to change without prior notice. REINTJES considers standard rotation engines to be counter-clockwise (ccw) in rotation, when viewed onto the flywheel end. Please advise REINTJES of engine rotation prior to gearbox selection.

Safety information

The majority of accidents which occur during operation, maintenance, and repair are caused by failure to observe basic safety rules and accident-prevention precautions. Accidents can often be avoided by correct assessment of potentially hazardous situations. The operating personnel must, at all times, be alert to potential hazards. Furthermore, they must be fully trained, skilled operators provided with the necessary tools and equipment required to perform these functions correctly. Supplementary to the operating manual, all generally valid legal and other binding regulations for accident prevention and pollution control have to be observed and adhered to.

Classification

Classification ratings are available on request.

Options

Information regarding options, trolling propulsion system, such as PTO etc are available on separate product sheets.

Marine Duty Cycle Classifications

P

Pleasure Duty

Intermittent operation with very large variations in engine speed and power.
Average engine operating hours limit: 500 hours/year.
Allowable hull forms: planing, semi-planing.
Allowable applications: private, non-commercial, non-charter, sport/leisure activities.

L

Light Duty

Intermittent operation with large variations in engine speed and power.
Average engine operating hours limit: 2,500 hours/year.
Allowable hull forms: planing, semi-planing, displacement.
Allowable applications: private, charter, sport/leisure activities, naval and police activities.

M

Medium Duty

Intermittent operation with some variations in engine speed and power.
Average engine operating hours limit: 4,000 hours/year.
Allowable hull forms: planing, semi-planing, displacement, catamaran.
Allowable applications: private, charter and commercial craft (example: crew boats), naval and police activities.

C

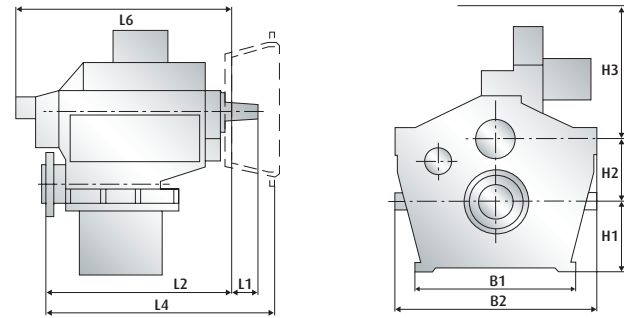
Continuous Duty

Continuous operation with little or no variations in engine speed and power.
Average engine operating hours: unlimited.
Allowable hull forms: displacement.
Allowable applications: commercial vessels.

Pleasure Duty

WAF/LAF* 164 – 274

* Reduction gearbox type AF without clutch available on request.



Main Dimensions mm (Vertically offset configuration)

Model	B1	B2	H1	H2	H3	L1	L2	L4 SAE 1	L4 SAE 0	L4 SAE 00	L6
WAF 164	505	660	315	290	370	70	595	-	655	-	685
WAF 244	530	640	240	215	355	70	560	-	625	-	685
WAF 264	540	670	345	315	365	70	595	-	660	-	685
WAF 274	700	830	420	380	365	70	600	-	665	-	690

P kW/rpm	1900 rpm		2100 rpm		2300 rpm		WEIGHT		RATIOS	
	BHP	(KW)	BHP	(KW)	BHP	(KW)	kg	(lbs)	# = special reduction ratio	
WAF 164										
0,25	636	(475)	704	(525)	770	(575)	525	(1155)	3,964#; 4,560; 5,044; 5,619#	
0,23	586	(437)	647	(483)	709	(529)	525	(1155)	5,950	
WAF 244										
0,29	747	(557)	825	(616)	904	(675)	455	(1001)	1,343#; 1,563#; 2,037#; 2,538	
0,29	738	(551)	816	(609)	894	(667)	455	(1001)	2,957	
0,27	687	(513)	760	(567)	832	(621)	455	(1001)	3,522	
0,25	636	(475)	704	(525)	770	(575)	455	(1001)	3,952	
WAF 264										
0,29	747	(557)	825	(616)	904	(675)	700	(1540)	3,519#; 4,083; 4,500	
0,29	738	(551)	816	(609)	894	(667)	700	(1540)	5,050	
0,28	713	(532)	788	(588)	863	(644)	700	(1540)	5,476#	
0,26	662	(494)	732	(546)	801	(598)	700	(1540)	5,800	
WAF 274										
0,29	747	(557)	825	(616)	904	(675)	725	(1595)	6,115#; 6,400#; 7,044	
0,27	687	(513)	760	(567)	832	(621)	725	(1595)	7,409#	

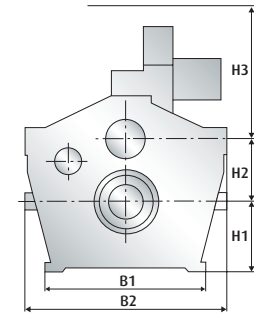
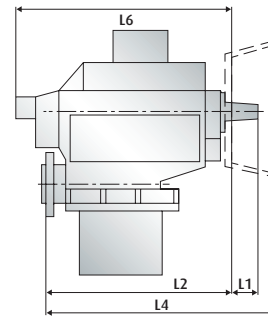
Pleasure Duty

WAF/LAF* 344 – 444

* Reduction gearbox type AF without clutch available on request.



Product brochure



Main Dimensions mm (Vertically offset configuration)

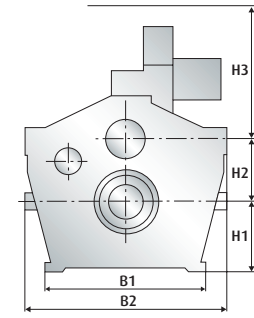
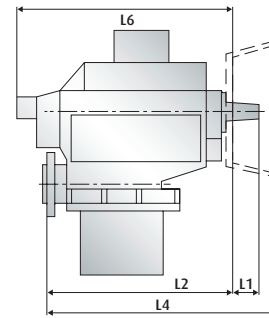
Model	B1	B2	H1	H2	H3	L1	L2	L4 SAE 1	L4 SAE 0	L4 SAE 00	L6
WAF 344	570	720	265	250	395	80	645	-	750	-	740
WAF 364	580	750	380	345	415	80	665	-	775	-	755
WAF 374	800	930	460	410	430	80	670	-	775	-	860
WAF 444	495	740	285	270	505	95	720	-	820	-	810

P kW/rpm	1900 rpm		2100 rpm		2300 rpm		WEIGHT		RATIOS
	BHP	(KW)	BHP	(KW)	BHP	(KW)	kg	(lbs)	# = special reduction ratio
WAF 344									
0,38	967	(722)	1069	(798)	1171	(874)	730	(1606)	1,277#; 1,488#; 1,972#; 2,452; 2,963
0,33	840	(627)	929	(693)	1017	(759)	730	(1606)	3,571
0,31	789	(589)	872	(651)	955	(713)	730	(1606)	4,053
WAF 364									
0,38	967	(722)	1069	(798)	1171	(874)	810	(1782)	3,485#; 3,933#; 4,482; 4,920; 5,435
0,37	942	(703)	1041	(777)	1140	(851)	810	(1782)	6,048
WAF 374									
0,38	967	(722)	1069	(798)	1171	(874)	1200	(2640)	6,120#; 6,417#; 7,091
0,35	891	(665)	985	(735)	1079	(805)	1200	(2640)	7,476
WAF 444									
0,48	1222	(912)	1351	(1008)	1479	(1104)	760	(1672)	1,468#; 1,698#; 1,974#; 2,467#; 2,962; 3,522
0,42	1069	(798)	1182	(882)	1294	(966)	760	(1672)	3,952

Pleasure Duty

WAF/LAF* 464 – 572

* Reduction gearbox type AF without clutch available on request.



Main Dimensions mm (Vertically offset configuration)

Model	B1	B2	H1	H2	H3	L1	L2	L4 SAE 1	L4 SAE 0	L4 SAE 00	L6
WAF 464	575	800	400	375	510	95	725	-	825	-	810
WAF 474	760	1310	510	460	330	95	745	845	845	-	810
WAF 542	530	840	380	310	540	95	775	-	895	910	935
WAF 563	570	920	475	410	550	95	820	-	940	960	1060
WAF 572	690	1360	575	505	500	95	835	-	955	970	980

P kW/rpm	1900 rpm		2100 rpm		2300 rpm		WEIGHT		RATIOS
	BHP	(KW)	BHP	(KW)	BHP	(KW)	kg	(lbs)	# = special reduction ratio
WAF 464									
0,48	1222	(912)	1351	(1008)	1479	(1104)	940	(2068)	4,000#; 4,577; 5,042; 5,591#
0,47	1197	(893)	1323	(987)	1449	(1081)	940	(2068)	5,905
WAF 474									
0,48	1222	(912)	1351	(1008)	1479	(1104)	1830	(4026)	6,120#; 6,417#; 7,091
0,47	1197	(893)	1323	(987)	1449	(1081)	1830	(4026)	7,476
WAF 542									
0,64	1629	(1216)	1801	(1344)	1972	(1472)	1035	(2277)	2,542#; 2,960; 3,542#; 3,955
0,63	1603	(1196)	1772	(1322)	1940	(1448)	1035	(2277)	4,450
WAF 563									
0,64	1629	(1216)	1801	(1344)	1972	(1472)	1445	(3179)	4,546#; 5,050; 5,421; 5,947
WAF 572									
0,64	1629	(1216)	1801	(1344)	1972	(1472)	2360	(5192)	6,417#; 7,091; 7,474

Pleasure Duty

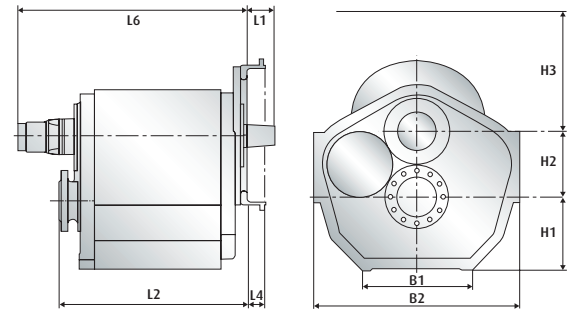
WVS/WLS 234/1 – 430/1

Light weight gearbox.

Input and output on opposite sides.



Product brochure



Main Dimensions mm (Vertically offset configuration)

Model	B1	B2	H1	H2	H3	L1	L2	L4 SAE 1	L4 SAE 0	L4 SAE 00	L6
WVS 234/1	475	640	200	200	420	69	483	64	-	-	680
WVS 334	530	720	240	215	420	100	564	109	-	-	700
WVS 430/1	400	730	260	235	390	-	675	60	-	-	840

P	1900 rpm		2100 rpm		2300 rpm		WEIGHT		RATIOS
	kW/rpm	BHP (KW)	BHP (KW)	BHP (KW)	BHP (KW)	kg	(lbs)	# = special reduction ratio	
WVS 234/1									
0,42	1069	(798)	1182	(882)	1294	(966)	295	(649)	1,179#; 1,500#
0,38	969	(723)	1071	(799)	1172	(875)	295	(649)	2,036
0,30	767	(572)	848	(633)	929	(693)	295	(649)	2,542#
0,26	660	(492)	729	(544)	798	(596)	295	(649)	2,864#
WVS 334									
0,47	1197	(893)	1323	(987)	1449	(1081)	340	(748)	1,122#; 1,485; 2,037; 2,407#; 2,538
0,38	974	(726)	1076	(803)	1178	(879)	340	(748)	2,956#
0,32	815	(608)	900	(672)	986	(736)	340	(748)	3,522#
WVS 430/1									
0,60	1528	(1140)	1688	(1260)	1849	(1380)	490	(1078)	1,184#; 1,485; 1,767; 2,037; 2,458
0,52	1324	(988)	1463	(1092)	1603	(1196)	490	(1078)	2,905#
0,45	1146	(855)	1266	(945)	1387	(1035)	490	(1078)	3,316#
0,42	1069	(798)	1182	(882)	1294	(966)	490	(1078)	3,550#

Pleasure Duty

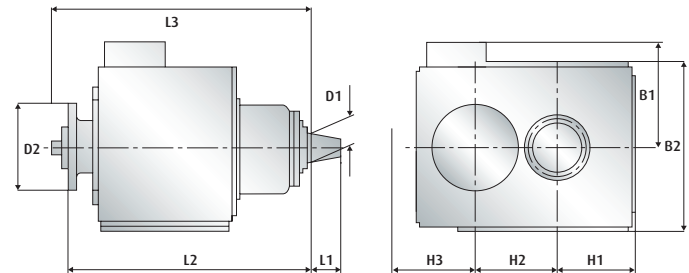
VLJ 430

Reduction gearbox with hydraulically operated clutch for waterjet application.

Available as vertically offset configuration on request.



Product brochure



Main Dimensions mm (Horizontally offset configuration)

Model	B1	B2	H1	H2	H3	L1	L2	L4 SAE 1	L4 SAE 0	L4 SAE 00	L6
VLJ 430	540	-	270	235	185	97	686	-	-	-	952

P

1600 rpm

1800 rpm

2100 rpm

WEIGHT

RATIOS

kW/rpm

BHP

(KW)

BHP

(KW)

BHP

(KW)

kg

(lbs)

= special reduction ratio

VLJ 430

0,60

1286

(960)

1447

(1080)

1688

(1260)

360

(792)

1,306; 1,767; 2,037; 2,458

0,52

1115

(832)

1254

(936)

1463

(1092)

360

(792)

2,905

0,42

900

(672)

1013

(756)

1182

(882)

360

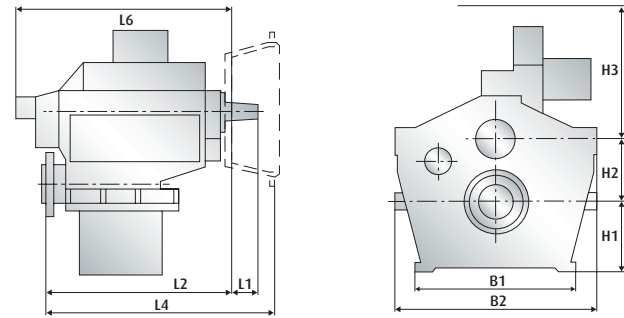
(792)

3,316

Light Duty

WAF/LAF* 164 – 264

* Reduction gearbox type AF without clutch available on request.



Main Dimensions mm (Vertically offset configuration)

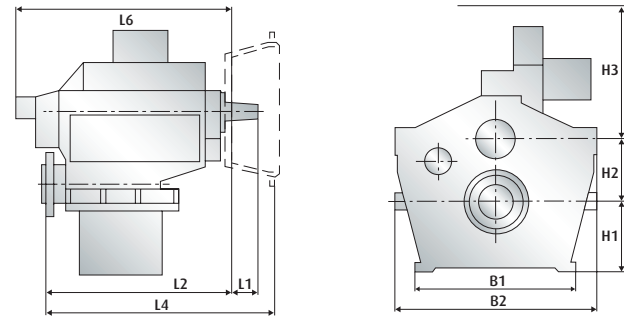
Model	B1	B2	H1	H2	H3	L1	L2	L4 SAE 1	L4 SAE 0	L4 SAE 00	L6
WAF 164	505	660	315	290	370	70	595	-	655	-	685
WAF 244	530	640	240	215	355	70	560	-	625	-	685
WAF 264	540	670	345	315	365	70	595	-	660	-	685

L kW/rpm	1600 rpm		1800 rpm		2100 rpm		WEIGHT		RATIOS
	BHP	(KW)	BHP	(KW)	BHP	(KW)	kg	(lbs)	# = special reduction ratio
WAF 164									
0,24	515	(384)	579	(432)	675	(504)	525	(1155)	3,964#; 4,560; 5,044; 5,619#
0,22	472	(352)	531	(396)	619	(462)	525	(1155)	5,950
WAF 244									
0,29	629	(469)	707	(528)	825	(616)	455	(1001)	1,343#; 1,563#; 2,037#; 2,538
0,28	600	(448)	675	(504)	788	(588)	455	(1001)	2,957
0,26	557	(416)	627	(468)	732	(546)	455	(1001)	3,522
0,24	515	(384)	579	(432)	675	(504)	455	(1001)	3,952
WAF 264									
0,29	629	(469)	707	(528)	825	(616)	700	(1540)	3,519#; 4,083; 4,500
0,28	600	(448)	675	(504)	788	(588)	700	(1540)	5,050
0,27	579	(432)	651	(486)	760	(567)	700	(1540)	5,476#
0,25	536	(400)	603	(450)	704	(525)	700	(1540)	5,800

Light Duty

WAF/LAF* 274 – 374

* Reduction gearbox type AF without clutch available on request.



Main Dimensions mm (Vertically offset configuration)

Model	B1	B2	H1	H2	H3	L1	L2	L4 SAE 1	L4 SAE 0	L4 SAE 00	L6
WAF 274	700	830	420	380	365	70	600	-	665	-	690
WAF 344	570	720	265	250	395	80	645	-	750	-	740
WAF 364	580	750	380	345	415	80	665	-	775	-	755
WAF 374	800	930	460	410	430	80	670	-	775	-	860

L

1600 rpm

1800 rpm

2100 rpm

WEIGHT

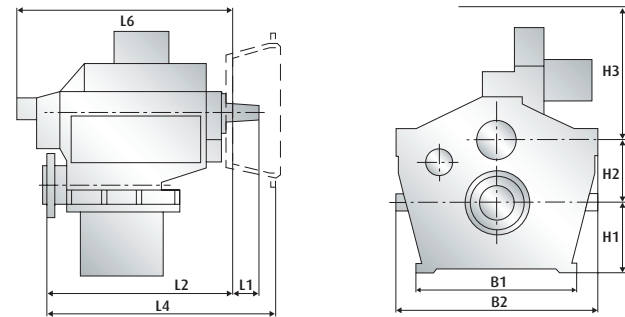
RATIOS

kw/rpm	BHP	(KW)	BHP	(KW)	BHP	(KW)	kg	(lbs)	# = special reduction ratio
WAF 274									
0,29	629	(469)	707	(528)	825	(616)	725	(1595)	6,115#; 6,400#
0,28	600	(448)	675	(504)	788	(588)	725	(1595)	7,044
0,26	557	(416)	627	(468)	732	(546)	725	(1595)	7,409#
WAF 344									
0,37	793	(592)	892	(666)	1041	(777)	730	(1606)	1,277#; 1,488#; 1,972#; 2,452; 2,963
0,34	729	(544)	820	(612)	957	(714)	730	(1606)	3,571
0,32	686	(512)	772	(576)	900	(672)	730	(1606)	4,053
WAF 364									
0,37	793	(592)	892	(666)	1041	(777)	810	(1782)	3,485#; 3,933#; 4,482; 4,920; 5,435
0,36	772	(576)	868	(648)	1013	(756)	810	(1782)	6,048
WAF 374									
0,37	793	(592)	892	(666)	1041	(777)	1200	(2640)	6,120#; 6,417#; 7,091
0,34	729	(544)	820	(612)	957	(714)	1200	(2640)	7,476

Light Duty

WAF/LAF* 444 – 542

* Reduction gearbox type AF without clutch available on request.



Main Dimensions mm (Vertically offset configuration)

Model	B1	B2	H1	H2	H3	L1	L2	L4 SAE 1	L4 SAE 0	L4 SAE 00	L6
WAF 444	495	740	285	270	505	95	720	-	820	-	810
WAF 464	575	800	400	375	510	95	725	-	825	-	810
WAF 474	760	1310	510	460	330	95	745	845	845	-	810
WAF 542	530	840	380	310	540	95	775	-	895	910	935

L

1600 rpm

1800 rpm

2100 rpm

WEIGHT

RATIOS

kW/rpm

BHP

(KW)

BHP

(KW)

BHP

(KW)

kg

(lbs)

= special reduction ratio

WAF 444

0,47	1008	(752)	1134	(846)	1323	(987)	760	(1672)	1,468#; 1,698#; 1,974#; 2,467#; 2,962
0,44	943	(704)	1061	(792)	1238	(924)	760	(1672)	3,522
0,41	879	(656)	989	(738)	1154	(861)	760	(1672)	3,952

WAF 464

0,47	1008	(752)	1134	(846)	1323	(987)	940	(2068)	4,000#; 4,577; 5,042; 5,591#
0,46	986	(736)	1110	(828)	1294	(966)	940	(2068)	5,905

WAF 474

0,47	1008	(752)	1134	(846)	1323	(987)	1830	(4026)	6,120#; 6,417#; 7,091
0,46	986	(736)	1110	(828)	1294	(966)	1830	(4026)	7,476

WAF 542

0,58	1244	(928)	1399	(1044)	1632	(1218)	1035	(2277)	2,542#; 2,960; 3,542#; 3,955; 4,450
------	------	-------	------	--------	------	--------	------	--------	-------------------------------------

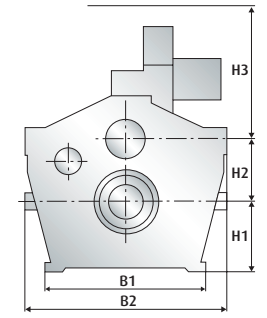
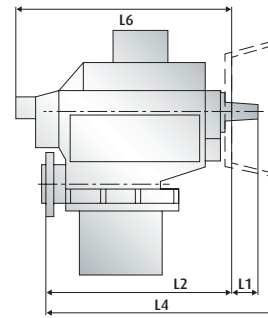
Light Duty

WAF/LAF* 563 – 572

* Reduction gearbox type AF without clutch available on request.



Product brochure



Main Dimensions mm (Vertically offset configuration)

Model	B1	B2	H1	H2	H3	L1	L2	L4 SAE 1	L4 SAE 0	L4 SAE 00	L6
WAF 563	570	920	475	410	550	95	820	-	940	960	1060
WAF 572	690	1360	575	505	500	95	835	-	955	970	980

L

1600 rpm

1800 rpm

2100 rpm

WEIGHT

RATIOS

kW/rpm

BHP

(KW)

BHP

(KW)

BHP

(KW)

kg

(lbs)

= special reduction ratio

WAF 563

0,59

1265

(944)

1423

(1062)

1660

(1239)

1445

(3179)

4,546#; 5,050; 5,421

0,58

1244

(928)

1399

(1044)

1632

(1218)

1445

(3179)

5,947

WAF 572

0,58

1244

(928)

1399

(1044)

1632

(1218)

2360

(5192)

6,417#; 7,091; 7,474

Light Duty

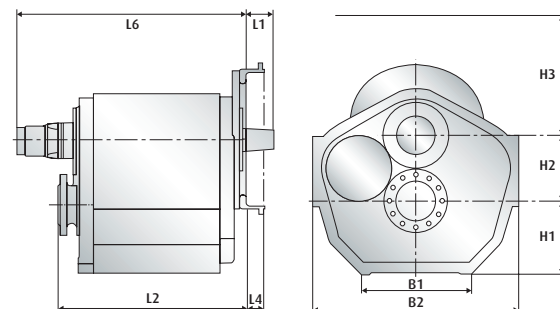
WVS/WLS 234/1 – 430/1

Light weight gearbox.

Input and output on opposite sides.



Product brochure



Main Dimensions mm (Vertically offset configuration)

Model	B1	B2	H1	H2	H3	L1	L2	L4 SAE 1	L4 SAE 0	L4 SAE 00	L6
WVS 234/1	475	640	200	200	420	69	483	64	-	-	680
WVS 334	530	720	240	215	420	100	564	109	-	-	700
WVS 430/1	400	730	260	235	390	-	675	60	-	-	840

L

1600 rpm

1800 rpm

2100 rpm

WEIGHT

RATIOS

kW/rpm

BHP

(KW)

BHP

(KW)

BHP

(KW)

kg

(lbs)

= special reduction ratio

WVS 234/1

0,27

579

(432)

651

(486)

760

(567)

295

(649)

1,179#; 1,500#; 2,036; 2,542#

0,25

536

(400)

603

(450)

704

(525)

295

(649)

2,864#

WVS 334

0,36

772

(576)

868

(648)

1013

(756)

340

(748)

1,122#; 1,485; 2,037; 2,407#

0,35

750

(560)

844

(630)

985

(735)

340

(748)

2,538

0,32

686

(512)

772

(576)

900

(672)

340

(748)

2,956#

0,29

622

(464)

699

(522)

816

(609)

340

(748)

3,522#

WVS 430/1

0,58

1244

(928)

1399

(1044)

1632

(1218)

490

(1078)

1,184#; 1,485; 1,767; 2,037; 2,458

0,50

1072

(800)

1206

(900)

1407

(1050)

490

(1078)

2,905#

0,45

965

(720)

1085

(810)

1266

(945)

490

(1078)

3,316#

0,42

900

(672)

1013

(756)

1182

(882)

490

(1078)

3,550#

Light Duty

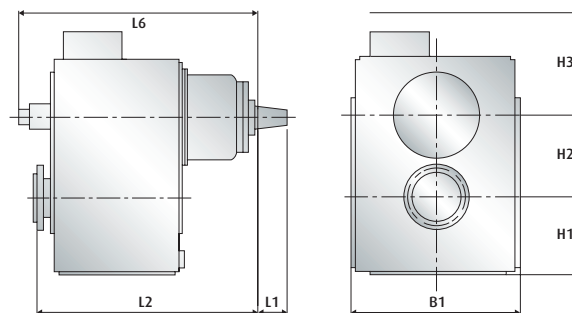
VLJ 430

Reduction gearbox with hydraulically operated clutch for waterjet application.

Available as horizontally offset configuration on request.



Product brochure



Main Dimensions mm (Vertically offset configuration)

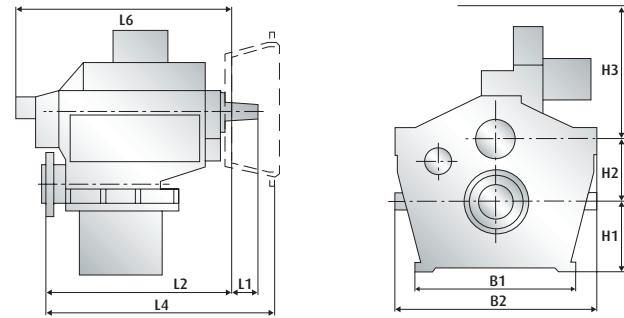
Model	B1	B2	H1	H2	H3	L1	L2	L4 SAE 1	L4 SAE 0	L4 SAE 00	L6
VLJ 430	540	-	270	235	185	97	686	-	-	-	952

L kW/rpm	1600 rpm		1800 rpm		2100 rpm		WEIGHT		RATIOS
	BHP	(KW)	BHP	(KW)	BHP	(KW)	kg	(lbs)	# = special reduction ratio
VLJ 430									
0,58	1244	(928)	1399	(1044)	1632	(1218)	360	(792)	1,306; 1,767; 2,037; 2,458
0,50	1072	(800)	1206	(900)	1407	(1050)	360	(792)	2,905
0,42	900	(672)	1013	(756)	1182	(882)	360	(792)	3,316

Medium Duty

WAF/LAF* 164 – 264

* Reduction gearbox type AF without clutch available on request.



Main Dimensions mm (Vertically offset configuration)

Model	B1	B2	H1	H2	H3	L1	L2	L4 SAE 1	L4 SAE 0	L4 SAE 00	L6
WAF 164	505	660	315	290	370	70	595	-	655	-	685
WAF 244	530	640	240	215	355	70	560	-	625	-	685
WAF 264	540	670	345	315	365	70	595	-	660	-	685

M kW/rpm	1600 rpm		1800 rpm		2100 rpm		WEIGHT		RATIOS
	BHP	(KW)	BHP	(KW)	BHP	(KW)	kg	(lbs)	# = special reduction ratio
WAF 164									
0,23	493	(368)	555	(414)	647	(483)	525	(1155)	3,964#; 4,560; 5,044; 5,619#
0,21	450	(336)	507	(378)	591	(441)	525	(1155)	5,950
WAF 244									
0,29	622	(464)	699	(522)	816	(609)	455	(1001)	1,343#; 1,563#; 2,037#; 2,538
0,27	579	(432)	651	(486)	760	(567)	455	(1001)	2,957
0,25	536	(400)	603	(450)	704	(525)	455	(1001)	3,522
0,23	493	(368)	555	(414)	647	(483)	455	(1001)	3,952
WAF 264									
0,29	622	(464)	699	(522)	816	(609)	700	(1540)	3,519#; 4,083; 4,500
0,27	579	(432)	651	(486)	760	(567)	700	(1540)	5,050
0,26	557	(416)	627	(468)	732	(546)	700	(1540)	5,476#
0,24	515	(384)	579	(432)	675	(504)	700	(1540)	5,800

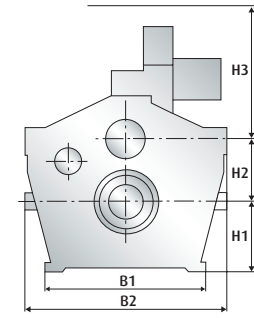
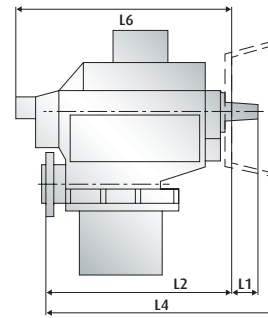
Medium Duty

WAF/LAF* 274 – 374

* Reduction gearbox type AF without clutch available on request.



Product brochure



Main Dimensions mm (Vertically offset configuration)

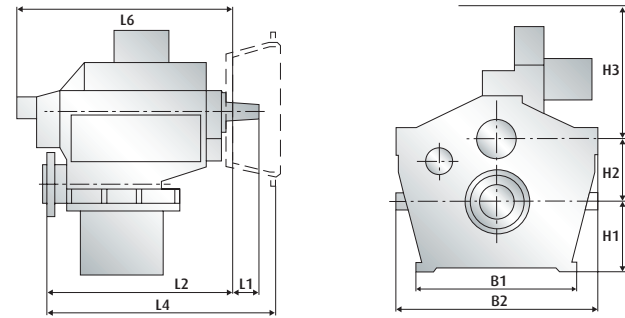
Model	B1	B2	H1	H2	H3	L1	L2	L4 SAE 1	L4 SAE 0	L4 SAE 00	L6
WAF 274	700	830	420	380	365	70	600	-	665	-	690
WAF 344	570	720	265	250	395	80	645	-	750	-	740
WAF 364	580	750	380	345	415	80	665	-	775	-	755
WAF 374	800	930	460	410	430	80	670	-	775	-	860

M kW/rpm	1600 rpm		1800 rpm		2100 rpm		WEIGHT		RATIOS
	BHP	(KW)	BHP	(KW)	BHP	(KW)	kg	(lbs)	# = special reduction ratio
WAF 274									
0,29	622	(464)	699	(522)	816	(609)	725	(1595)	6,115#; 6,400#
0,27	579	(432)	651	(486)	760	(567)	725	(1595)	7,044
0,25	536	(400)	603	(450)	704	(525)	725	(1595)	7,409#
WAF 344									
0,36	772	(576)	868	(648)	1013	(756)	730	(1606)	1,277#; 1,488#; 1,972#; 2,452; 2,963
0,33	708	(528)	796	(594)	929	(693)	730	(1606)	3,571
0,31	665	(496)	748	(558)	872	(651)	730	(1606)	4,053
WAF 364									
0,36	772	(576)	868	(648)	1013	(756)	810	(1782)	3,485#; 3,933#; 4,482; 4,920; 5,435
0,35	750	(560)	844	(630)	985	(735)	810	(1782)	6,048
WAF 374									
0,36	772	(576)	868	(648)	1013	(756)	1200	(2640)	6,120#; 6,417#; 7,091
0,33	708	(528)	796	(594)	929	(693)	1200	(2640)	7,476

Medium Duty

WAF/LAF* 444 – 542

* Reduction gearbox type AF without clutch available on request.



Main Dimensions mm (Vertically offset configuration)

Model	B1	B2	H1	H2	H3	L1	L2	L4 SAE 1	L4 SAE 0	L4 SAE 00	L6
WAF 444	495	740	285	270	505	95	720	-	820	-	810
WAF 464	575	800	400	375	510	95	725	-	825	-	810
WAF 474	760	1310	510	460	330	95	745	845	845	-	810
WAF 542	530	840	380	310	540	95	775	-	895	910	935

M kW/rpm	1600 rpm		1800 rpm		2100 rpm		WEIGHT		RATIOS
	BHP	(KW)	BHP	(KW)	BHP	(KW)	kg	(lbs)	# = special reduction ratio
WAF 444									
0,46	986	(736)	1110	(828)	1294	(966)	760	(1672)	1,468#; 1,698#; 1,974#; 2,467#; 2,962
0,42	900	(672)	1013	(756)	1182	(882)	760	(1672)	3,522
0,40	858	(640)	965	(720)	1126	(840)	760	(1672)	3,952
WAF 464									
0,46	986	(736)	1110	(828)	1294	(966)	940	(2068)	4,000#; 4,577; 5,042; 5,591#
0,45	965	(720)	1085	(810)	1266	(945)	940	(2068)	5,905
WAF 474									
0,46	986	(736)	1110	(828)	1294	(966)	1830	(4026)	6,120#; 6,417#; 7,091
0,45	965	(720)	1085	(810)	1266	(945)	1830	(4026)	7,476
WAF 542									
0,57	1222	(912)	1375	(1026)	1604	(1197)	1035	(2277)	2,542#; 2,960; 3,542#
0,55	1179	(880)	1327	(990)	1548	(1155)	1035	(2277)	3,955; 4,450

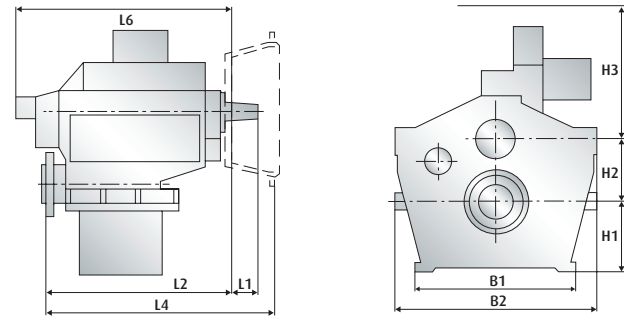
Medium Duty

WAF/LAF* 563 – 572

* Reduction gearbox type AF without clutch available on request.



Product brochure



Main Dimensions mm (Vertically offset configuration)

Model	B1	B2	H1	H2	H3	L1	L2	L4 SAE 1	L4 SAE 0	L4 SAE 00	L6
WAF 563	570	920	475	410	550	95	820	-	940	960	1060
WAF 572	690	1360	575	505	500	95	835	-	955	970	980

M kW/rpm	1600 rpm		1800 rpm		2100 rpm		WEIGHT		RATIOS
	BHP	(KW)	BHP	(KW)	BHP	(KW)	kg	(lbs)	# = special reduction ratio
WAF 563									
0,59	1265	(944)	1423	(1062)	1660	(1239)	1445	(3179)	4,546#; 5,050; 5,421
0,55	1179	(880)	1327	(990)	1548	(1155)	1445	(3179)	5,947
WAF 572									
0,57	1222	(912)	1375	(1026)	1604	(1197)	2360	(5192)	6,417#; 7,091
0,54	1158	(864)	1302	(972)	1520	(1134)	2360	(5192)	7,474

Medium Duty

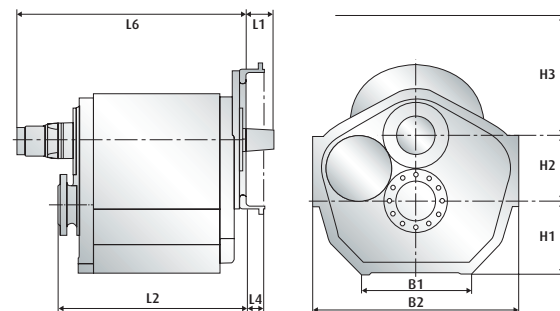
WVS/WLS 234/1 – 430/1

Light weight gearbox.

Input and output on opposite sides.



Product brochure



Main Dimensions mm (Vertically offset configuration)

Model	B1	B2	H1	H2	H3	L1	L2	L4 SAE 1	L4 SAE 0	L4 SAE 00	L6
WVS 234/1	475	640	200	200	420	69	483	64	-	-	680
WVS 334	530	720	240	215	420	100	564	109	-	-	700
WVS 430/1	400	730	260	235	390	-	675	60	-	-	840

M

1600 rpm

1800 rpm

2100 rpm

WEIGHT

RATIOS

kw/rpm

BHP

(KW)

BHP

(KW)

BHP

(KW)

kg

(lbs)

= special reduction ratio

WVS 234/1

0,23

493

(368)

555

(414)

647

(483)

295

(649)

1,179#; 1,500#; 2,036; 2,542#

0,21

450

(336)

507

(378)

591

(441)

295

(649)

2,864#

WVS 334

0,31

654

(488)

736

(549)

858

(640)

340

(748)

1,122#; 1,485

0,28

590

(440)

663

(495)

774

(578)

340

(748)

2,037

0,25

536

(400)

603

(450)

704

(525)

340

(748)

2,407#; 2,538

0,21

450

(336)

507

(378)

591

(441)

340

(748)

2,956#

0,21

440

(328)

494

(369)

577

(430)

340

(748)

3,522#

WVS 430/1

0,52

1115

(832)

1254

(936)

1463

(1092)

490

(1078)

1,184#; 1,485; 1,767; 2,037; 2,458

0,40

858

(640)

965

(720)

1126

(840)

490

(1078)

2,905#

0,37

793

(592)

892

(666)

1041

(777)

490

(1078)

3,316#

0,35

750

(560)

844

(630)

985

(735)

490

(1078)

3,550#

Medium Duty

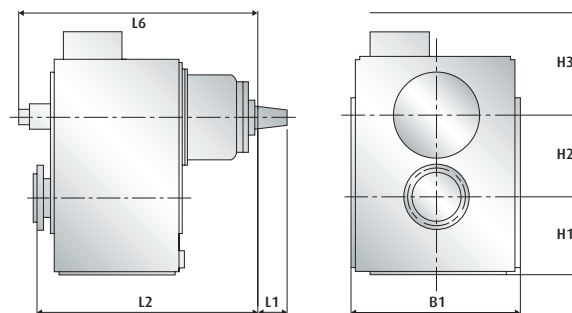
VLJ 430

Reduction gearbox with hydraulically operated clutch for waterjet application.

Available as horizontally offset configuration on request.



Product brochure



Main Dimensions mm (Vertically offset configuration)

Model	B1	B2	H1	H2	H3	L1	L2	L4 SAE 1	L4 SAE 0	L4 SAE 00	L6
VLJ 430	540	-	270	235	185	97	686	-	-	-	952

M

kW/rpm	1200 rpm		1600 rpm		1800 rpm		WEIGHT		RATIOS
	BHP	(KW)	BHP	(KW)	BHP	(KW)	kg	(lbs)	# = special reduction ratio
VLJ 430									
0,52	836	(624)	1115	(832)	1254	(936)	360	(792)	1,306; 1,767; 2,037; 2,458
0,40	643	(480)	858	(640)	965	(720)	360	(792)	2,905
0,35	563	(420)	750	(560)	844	(630)	360	(792)	3,316

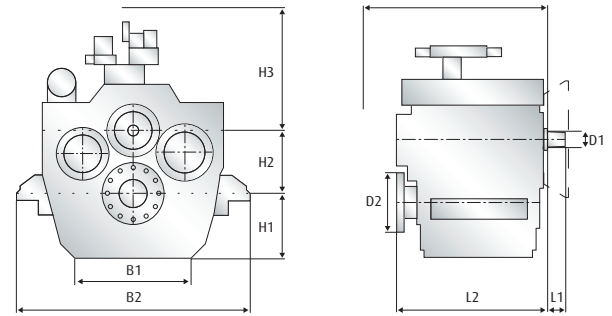
Medium Duty

ZWVS 440

Light weight gearbox.



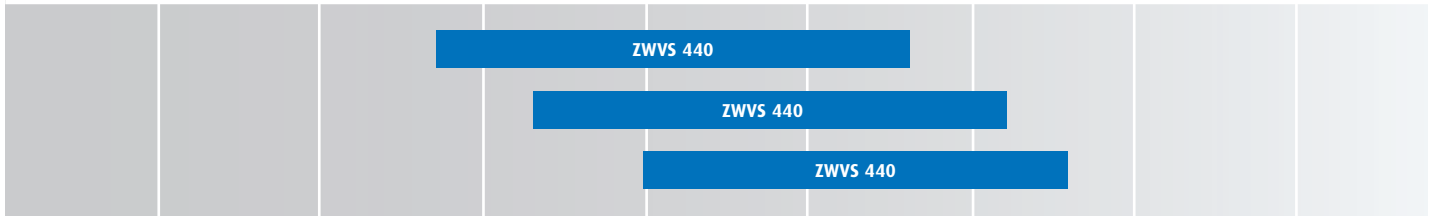
Product brochure



Main Dimensions mm (Vertically offset configuration)

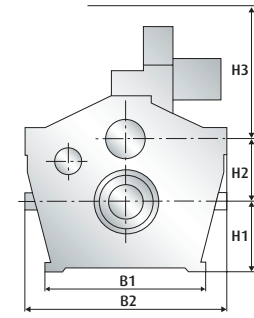
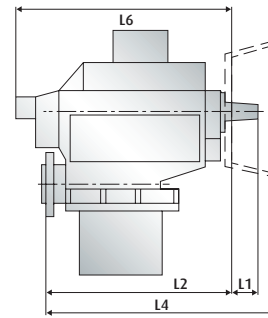
Model	B1	B2	D1	D2	H1	H2	H3	L1	L2	L6	Weight (kg)
ZWVS 440	400	910	75	220	288	250	640-560	97	678	770	720

kW	200	400	600	800	1000	1200	1400	1600
BHP	270	536	804	1072	1340	1680	1876	2144



Continuous Duty

WAF 164L – 264L



Main Dimensions mm (Vertical offset configuration)

Model	B1	B2	H1	H2	H3	L1	L2	L4 SAE 1	L4 SAE 0	L4 SAE 00	L6
WAF 164L	505	660	315	290	370	70	595	-	655	-	685
WAF 244L	530	640	240	215	355	70	560	-	625	-	685
WAF 264L	540	670	345	315	365	70	595	-	660	-	685

C

1200 rpm

1600 rpm

1800 rpm

WEIGHT

RATIOS

kW/rpm

BHP

(KW)

BHP

(KW)

BHP

(KW)

kg

(lbs)

= special reduction ratio

WAF 164L

0,20

322

(240)

429

(320)

482

(360)

525

(1155)

4,560; 5,044

0,16

257

(192)

343

(256)

386

(288)

525

(1155)

5,950

WAF 244L

0,25

402

(300)

536

(400)

603

(450)

455

(1001)

2,538; 2,957

0,23

370

(276)

493

(368)

555

(414)

455

(1001)

3,522

0,21

338

(252)

450

(336)

507

(378)

455

(1001)

3,952

WAF 264L

0,25

402

(300)

536

(400)

603

(450)

700

(1540)

4,083; 4,500; 5,050

0,22

354

(264)

472

(352)

531

(396)

700

(1540)

5,800

WAF 274L

0,25

402

(300)

536

(400)

603

(450)

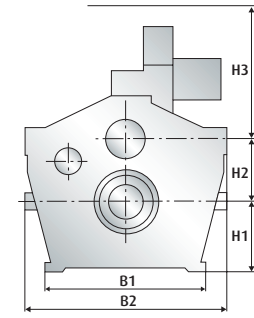
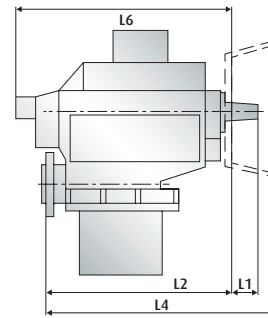
725

(1595)

7,044

Continuous Duty

WAF 344L – 444L



Main Dimensions mm (Vertically offset configuration)

Model	B1	B2	H1	H2	H3	L1	L2	L4 SAE 1	L4 SAE 0	L4 SAE 00	L6
WAF 344L	570	720	265	250	395	80	645	-	750	-	740
WAF 364L	580	750	380	345	415	80	665	-	775	-	755
WAF 374L	800	930	460	410	430	80	670	-	775	-	860
WAF 444L	495	740	285	270	505	95	720	-	820	-	810

C

1200 rpm

1600 rpm

1800 rpm

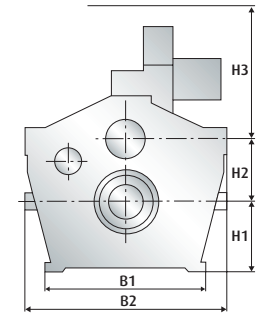
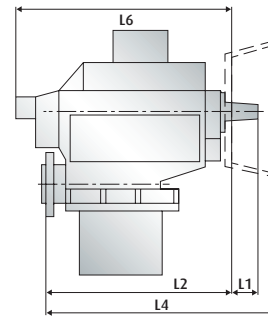
WEIGHT

RATIOS

kW/rpm	BHP	(KW)	BHP	(KW)	BHP	(KW)	kg	(lbs)	# = special reduction ratio
WAF 344L									
0,33	531	(396)	708	(528)	796	(594)	730	(1606)	2,452; 2,963
0,29	466	(348)	622	(464)	699	(522)	730	(1606)	3,571
0,28	450	(336)	600	(448)	675	(504)	730	(1606)	4,053
WAF 364L									
0,33	531	(396)	708	(528)	796	(594)	810	(1782)	4,482; 4,920; 5,435
0,30	482	(360)	643	(480)	724	(540)	810	(1782)	6,048
WAF 374L									
0,32	515	(384)	686	(512)	772	(576)	1200	(2640)	7,091
0,29	466	(348)	622	(464)	699	(522)	1200	(2640)	7,476
WAF 444L									
0,40	643	(480)	858	(640)	965	(720)	760	(1672)	2,962; 3,522
0,35	563	(420)	750	(560)	844	(630)	760	(1672)	3,952

Continuous Duty

WAF 464L – 572L



Main Dimensions mm (Vertically offset configuration)

Model	B1	B2	H1	H2	H3	L1	L2	L4 SAE 1	L4 SAE 0	L4 SAE 00	L6
WAF 464	575	800	400	375	510	95	725	-	825	-	810
WAF 474	760	1310	510	460	330	95	745	845	845	-	810
WAF 542	530	840	380	310	540	95	775	-	895	910	935
WAF 562	570	920	475	410	550	95	820	-	940	960	1060
WAF 563	570	920	475	410	550	95	820	-	940	960	1060
WAF 572	690	1360	575	505	500	95	835	-	955	970	980

C

1200 rpm

1600 rpm

1800 rpm

WEIGHT

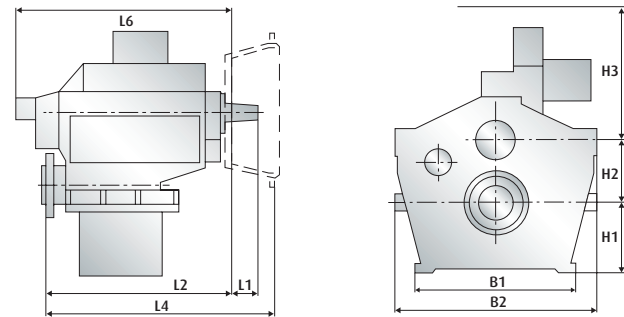
RATIOS

kw/rpm	BHP	(KW)	BHP	(KW)	BHP	(KW)	kg	(lbs)	# = special reduction ratio
WAF 464L									
0,40	643	(480)	858	(640)	965	(720)	940	(2068)	4,577; 5,042; 5,905
WAF 474L									
0,40	643	(480)	858	(640)	965	(720)	1830	(4026)	7,091
0,36	579	(432)	772	(576)	868	(648)	1830	(4026)	7,476
WAF 542L									
0,53	852	(636)	1136	(848)	1278	(954)	1035	(2277)	2,960; 3,955
0,49	788	(588)	1051	(784)	1182	(882)	1035	(2277)	4,450
WAF 562L									
0,53	852	(636)	1136	(848)	1278	(954)	1440	(3168)	5,050; 5,421; 5,947
WAF 572L									
0,53	852	(636)	1136	(848)	1278	(954)	2360	(5192)	7,091; 7,474

Continuous Duty

WAF/LAF* 164 – 264

* Reduction gearbox type AF without clutch available on request.



Main Dimensions mm (Vertically offset configuration)

Model	B1	B2	H1	H2	H3	L1	L2	L4 SAE 1	L4 SAE 0	L4 SAE 00	L6
WAF 164	505	660	315	290	370	70	595	-	655	-	685
WAF 244	530	640	240	215	355	70	560	-	625	-	685
WAF 264	540	670	345	315	365	70	595	-	660	-	685

C

1200 rpm

1600 rpm

1800 rpm

WEIGHT

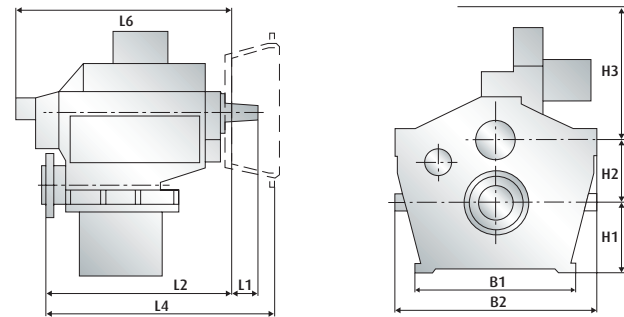
RATIOS

kW/rpm	BHP	(KW)	BHP	(KW)	BHP	(KW)	kg	(lbs)	# = special reduction ratio
WAF 164									
0,22	354	(264)	472	(352)	531	(396)	525	(1155)	3,964#; 4,560; 5,044; 5,619#
0,21	338	(252)	450	(336)	507	(378)	525	(1155)	5,950
WAF 244									
0,29	466	(348)	622	(464)	699	(522)	455	(1001)	1,343#; 1,563#; 2,037#; 2,538
0,27	434	(324)	579	(432)	651	(486)	455	(1001)	2,957
0,24	386	(288)	515	(384)	579	(432)	455	(1001)	3,522
0,23	370	(276)	493	(368)	555	(414)	455	(1001)	3,952
WAF 264									
0,29	466	(348)	622	(464)	699	(522)	700	(1540)	3,519#; 4,083; 4,500
0,27	434	(324)	579	(432)	651	(486)	700	(1540)	5,050
0,26	418	(312)	557	(416)	627	(468)	700	(1540)	5,476#
0,24	386	(288)	515	(384)	579	(432)	700	(1540)	5,800

Continuous Duty

WAF/LAF* 274 – 374

* Reduction gearbox type AF without clutch available on request.



Main Dimensions mm (Vertically offset configuration)

Model	B1	B2	H1	H2	H3	L1	L2	L4 SAE 1	L4 SAE 0	L4 SAE 00	L6
WAF 274	700	830	420	380	365	70	600	-	665	-	690
WAF 344	570	720	265	250	395	80	645	-	750	-	740
WAF 364	580	750	380	345	415	80	665	-	775	-	755
WAF 374	800	930	460	410	430	80	670	-	775	-	860

C

1200 rpm

1600 rpm

1800 rpm

WEIGHT

RATIOS

kw/rpm	BHP	(KW)	BHP	(KW)	BHP	(KW)	kg	(lbs)	# = special reduction ratio
WAF 274									
0,29	466	(348)	622	(464)	699	(522)	725	(1595)	6,115#; 6,400#
0,27	434	(324)	579	(432)	651	(486)	725	(1595)	7,044
0,25	402	(300)	536	(400)	603	(450)	725	(1595)	7,409#
WAF 344									
0,36	579	(432)	772	(576)	868	(648)	730	(1606)	1,277#; 1,488#; 1,972#; 2,452; 2,963
0,33	531	(396)	708	(528)	796	(594)	730	(1606)	3,571
0,31	498	(372)	665	(496)	748	(558)	730	(1606)	4,053
WAF 364									
0,36	579	(432)	772	(576)	868	(648)	810	(1782)	3,485#; 3,933#; 4,482; 4,920; 5,435
0,34	547	(408)	729	(544)	820	(612)	810	(1782)	6,048
WAF 374									
0,36	579	(432)	772	(576)	868	(648)	1200	(2640)	6,120#; 6,417#; 7,091
0,33	531	(396)	708	(528)	796	(594)	1200	(2640)	7,476

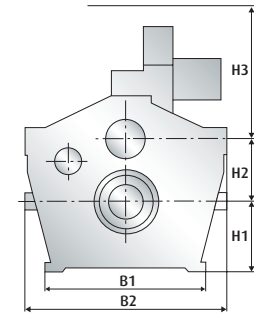
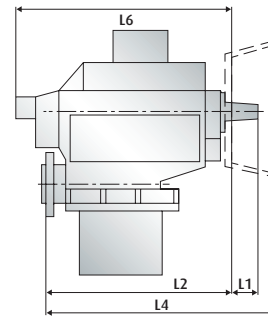
Continuous Duty

WAF/LAF* 444 – 474

* Reduction gearbox type AF without clutch available on request.



Product brochure



Main Dimensions mm (Vertically offset configuration)

Model	B1	B2	H1	H2	H3	L1	L2	L4 SAE 1	L4 SAE 0	L4 SAE 00	L6
WAF 444	495	740	285	270	505	95	720	-	820	-	810
WAF 464	575	800	400	375	510	95	725	-	825	-	810
WAF 474	760	1310	510	460	330	95	745	845	845	-	810

C

1200 rpm

1600 rpm

1800 rpm

WEIGHT

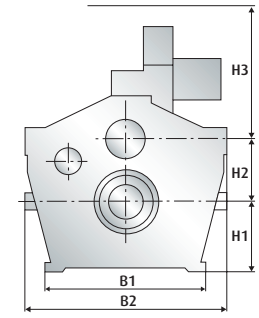
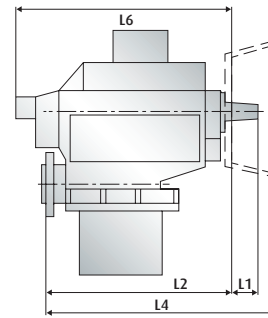
RATIOS

kW/rpm	BHP (KW)		BHP (KW)		BHP (KW)		kg	(lbs)	# = special reduction ratio
WAF 444									
0,46	740	(552)	986	(736)	1110	(828)	760	(1672)	1,468#; 1,698#; 1,974#; 2,467#
0,44	708	(528)	943	(704)	1061	(792)	760	(1672)	2,962
0,42	675	(504)	900	(672)	1013	(756)	760	(1672)	3,522
0,40	643	(480)	858	(640)	965	(720)	760	(1672)	3,952
WAF 464									
0,46	740	(552)	986	(736)	1110	(828)	940	(2068)	4,000#; 4,577; 5,042; 5,591#
0,45	724	(540)	965	(720)	1085	(810)	940	(2068)	5,905
WAF 474									
0,46	740	(552)	986	(736)	1110	(828)	1830	(4026)	6,120#; 6,417#
0,45	724	(540)	965	(720)	1085	(810)	1830	(4026)	7,091
0,41	659	(492)	879	(656)	989	(738)	1830	(4026)	7,476

Continuous Duty

WAF/LAF* 542 – 572

* Reduction gearbox type AF without clutch available on request.



Main Dimensions mm (Vertically offset configuration)

Model	B1	B2	H1	H2	H3	L1	L2	L4 SAE 1	L4 SAE 0	L4 SAE 00	L6
WAF 542	530	840	380	310	540	95	775	-	895	910	935
WAF 563	570	920	475	410	550	95	820	-	940	960	1060
WAF 572	690	1360	575	505	500	95	835	-	955	970	980

C

1200 rpm

1600 rpm

1800 rpm

WEIGHT

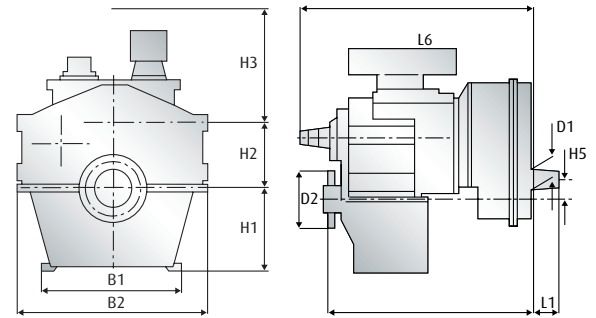
RATIOS

kW/rpm	BHP (KW)		BHP (KW)		BHP (KW)		kg	(lbs)	# = special reduction ratio
WAF 542									
0,57	917	(684)	1222	(912)	1375	(1026)	1035	(2277)	2,542#; 2,960; 3,542#
0,55	884	(660)	1179	(880)	1327	(990)	1035	(2277)	3,955
0,49	788	(588)	1051	(784)	1182	(882)	1035	(2277)	4,450
WAF 563									
0,59	949	(708)	1265	(944)	1423	(1062)	1445	(3179)	4,546#; 5,050; 5,421
0,55	884	(660)	1179	(880)	1327	(990)	1445	(3179)	5,947
WAF 572									
0,57	917	(684)	1222	(912)	1375	(1026)	2360	(5192)	6,417#
0,56	900	(672)	1201	(896)	1351	(1008)	2360	(5192)	7,091
0,54	868	(648)	1158	(864)	1302	(972)	2360	(5192)	7,474

Continuous Duty

WGF 562

Partly vertical offset. Further sizes on request.
Also available as LGF-model without reverse step.



Main Dimensions mm

Model	B1	B2	D1	D2	H1	H2	H3	H5	L1	L2	L6	Weight (kg)
WGF 562	570	920	92	350	550	160	110	1140	1300	1835	910	1035

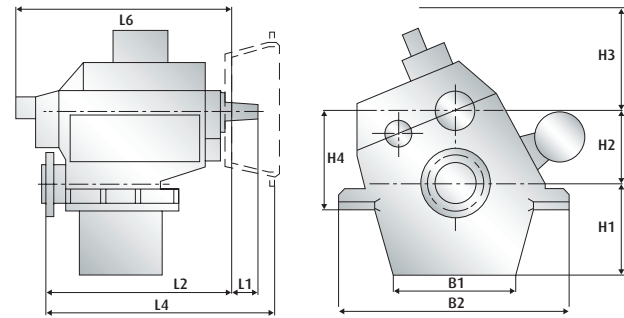
WGF 562

Reduction ratios	Power/speed ratios without survey	Input speed up to (min ⁻¹)
2,872	0,93	1100
3,197	0,84	1200
3,545	0,75	1300
4,131	0,72	1600
4,570	0,59	1800
5,309	0,50	1800
6,300	0,46	1800
7,334	0,39	2100
8,569	0,33	2100
9,536	0,30	2100
10,459	0,30	2100

Continuous Duty

WAF/LAF* 665 – 773

* Reduction gearbox type AF without clutch available on request.



Main Dimensions mm (Vertically offset configuration)

Model	Mounting brackets included	B1	B2	H1	H2	H3	H4	L1	L2	L4 SAE 1	L4 SAE 0	L4 SAE 00	L6
WAF 665	•	430	1160	490	430	540	560	101	881	-	1042	1042	1200
WAF 675	•	650	1480	610	550	540	680	101	892	-	1053	1053	1200
WAF 743	•	610	1160	490	380	550	510	107	933	-	-	1142	1190
WAF 763	•	680	1300	530	490	550	630	107	934	-	-	1143	1190
WAF 773	•	790	1670	680	620	550	760	107	951	-	-	-	1190

C

1200 rpm

1600 rpm

1800 rpm

WEIGHT

RATIOS

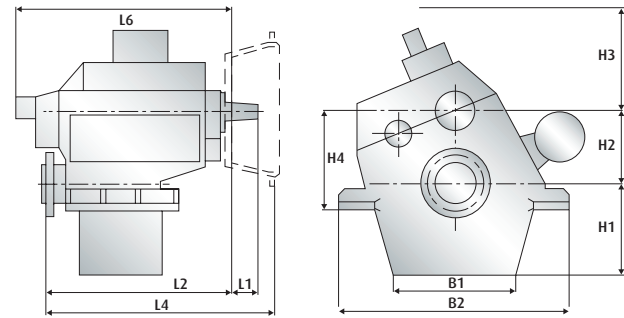
kw/rpm	BHP	(KW)	BHP	(KW)	BHP	(KW)	kg	(lbs)	# = special reduction ratio
WAF 665									
0,77	1238	(924)	1651	(1232)	1857	(1386)	1950	(4290)	3,536; 4,080; 4,560#; 5,044; 5,571; 5,950
WAF 675									
0,77	1238	(924)	1651	(1232)	1857	(1386)	2600	(5720)	6,417#; 6,739; 7,091; 7,476#
WAF 743									
0,98	1576	(1176)	2101	(1568)	2364	(1764)	1800	(3960)	2,467#; 3,038; 3,333; 3,550; 3,727
0,97	1560	(1164)	2080	(1552)	2340	(1746)	1800	(3960)	3,952
0,94	1512	(1128)	2015	(1504)	2267	(1692)	1800	(3960)	4,200
WAF 763									
0,98	1576	(1176)	2101	(1568)	2364	(1764)	2300	(5060)	4,192; 4,625; 4,870; 5,136; 5,429#; 5,750
0,97	1560	(1164)	2080	(1552)	2340	(1746)	2300	(5060)	5,913
WAF 773									
0,98	1576	(1176)	2101	(1568)	2364	(1764)	3200	(7040)	6,154#; 6,440#; 6,750; 7,087; 7,454

Continuous Duty

WAF/LAF* 843 – 1143

* Reduction gearbox type AF without clutch available on request.

Available as horizontally offset configuration on request.



Main Dimensions mm (Vertically offset configuration)

Model	Mounting brackets included	B1	B2	H1	H2	H3	H4	L1	L2	L4 SAE 1	L4 SAE 0	L4 SAE 00	L6
WAF 843	•	680	1300	530	425	550	565	123	970	-	-	-	1280
WAF 863	•	705	1400	590	540	550	690	123	1000	-	-	-	1280
WAF 873	•	860	1650	750	670	550	710	123	1030	-	-	-	1280
WAF 1143	•	705	1400	590	450	650	600	142	1053	-	-	-	1368

C

1200 rpm

1600 rpm

1800 rpm

WEIGHT

RATIOS

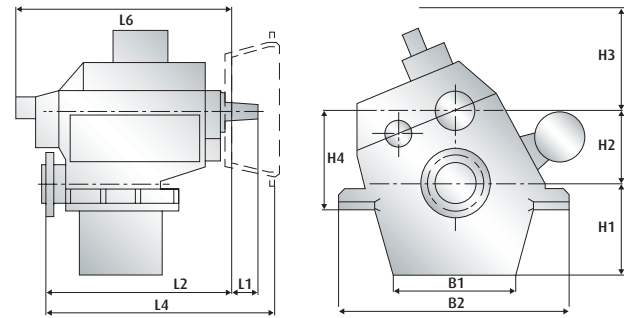
kw/rpm	BHP (KW)		BHP (KW)		BHP (KW)		kg	(lbs)	# = special reduction ratio
WAF 843									
1,38	2219	(1656)	2959	(2208)	3329	(2484)	2300	(5060)	2,091#; 2,517#; 3,080; 3,500; 3,905
1,27	2042	(1524)	2723	(2032)	3063	(2286)	2300	(5060)	4,318
WAF 863									
1,38	2219	(1656)	2959	(2208)	3329	(2484)	3100	(6820)	4,038#; 4,458#; 4,954; 5,500#; 5,842
WAF 873									
1,38	2219	(1656)	2959	(2208)	3329	(2484)	4100	(9020)	6,154#; 6,440#; 6,750; 7,087; 7,454; 7,526
WAF 1143									
1,63	2621	(1956)	3495	(2608)	3932	(2934)	2750	(6050)	1,966#; 2,429#; 2,840; 3,037
1,60	2573	(1920)	3430	(2560)	3859	(2880)	2750	(6050)	3,500#
1,48	2380	(1776)	3173	(2368)	3570	(2664)	2750	(6050)	3,909

Continuous Duty

WAF/LAF* 1163 – 1543

* Reduction gearbox type AF without clutch available on request.

Available as horizontally offset configuration on request.



Main Dimensions mm (Vertically offset configuration)

Model	Mounting brackets included	B1	B2	H1	H2	H3	H4	L1	L2	L4 SAE 1	L4 SAE 0	L4 SAE 00	L6
WAF 1163	•	855	1520	660	590	650	750	142	1085	-	-	-	1368
WAF 1173	•	on request											
WAF 1543	•	855	1520	660	490	650	650	154	1133	-	-	-	1413

C	1200 rpm		1600 rpm		1800 rpm		WEIGHT		RATIOS
	kw/rpm	BHP (KW)	BHP (KW)	BHP (KW)	kg	(lbs)	# = special reduction ratio		
WAF 1163									
1,63	2621	(1956)	3495	(2608)	3932	(2934)	3600	(7920)	4,500#; 4,720; 4,958
1,53	2460	(1836)	3280	(2448)	3690	(2754)	3600	(7920)	5,500#
1,45	2332	(1740)	3109	(2320)	3497	(2610)	3600	(7920)	5,810#
WAF 1173									
1,63	2621	(1956)	3495	(2608)	3932	(2934)	5000	(11000)	6,080; 6,375; 6,696#
1,50	2412	(1800)	3216	(2400)	3618	(2700)	5000	(11000)	7,046; 7,429

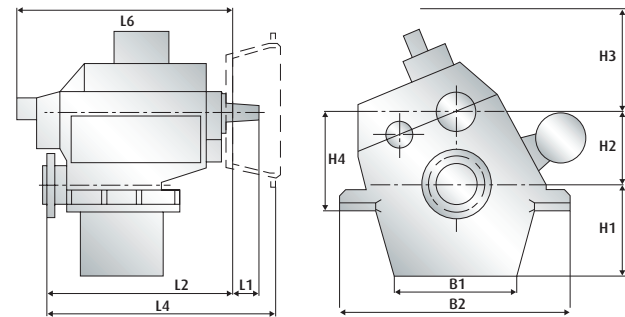
C	1200 rpm		1300 rpm		1600 rpm		WEIGHT		RATIOS
	kw/rpm	BHP (KW)	BHP (KW)	BHP (KW)	kg	(lbs)	# = special reduction ratio		
WAF 1543									
2,04	3280	(2448)	3554	(2652)	4374	(3264)	3400	(7480)	2,032#; 2,467#; 3,038
1,90	3055	(2280)	3310	(2470)	4074	(3040)	3400	(7480)	3,522#; 3,857

Continuous Duty

WAF/LAF* 1563 – 1973

* Reduction gearbox type AF without clutch available on request.

Available as horizontally offset configuration on request.



Main Dimensions mm (Vertically offset configuration)

Model	Mounting brackets included	B1	B2	H1	H2	H3	H4	L1	L2	L4 SAE 1	L4 SAE 0	L4 SAE 00	L6
WAF 1563	•	925	1620	675	630	650	790	154	1163	-	-	-	1413
WAF 1943	•	925	1620	675	485	600	645	162	1261	-	-	-	1556
WAF 1963	•	970	1680	720	675	600	845	162	1281	-	-	-	1556
WAF 1973	•	1000	2210	865	820	700	970	162	1347	-	-	-	1700

C

1200 rpm

1300 rpm

1600 rpm

WEIGHT

RATIOS

kW/rpm

BHP

(KW)

BHP

(KW)

BHP

(KW)

kg

(lbs)

= special reduction ratio

WAF 1563

2,04

3280

(2448)

3554

(2652)

4374

(3264)

4460

(9812)

4,429#; 4,846

1,80

2894

(2160)

3136

(2340)

3859

(2880)

4460

(9812)

5,375; 5,444#; 5,954

WAF 1943

2,20

3538

(2640)

3832

(2860)

4717

(3520)

4460

(9812)

2,059#; 2,467#; 2,962; 3,522#; 3,952

WAF 1963

2,20

3538

(2640)

3832

(2860)

4717

(3520)

5540

(12188)

4,467#; 5,074; 5,560#; 5,952

WAF 1973

2,20

3538

(2640)

3832

(2860)

4717

(3520)

8500

(18700)

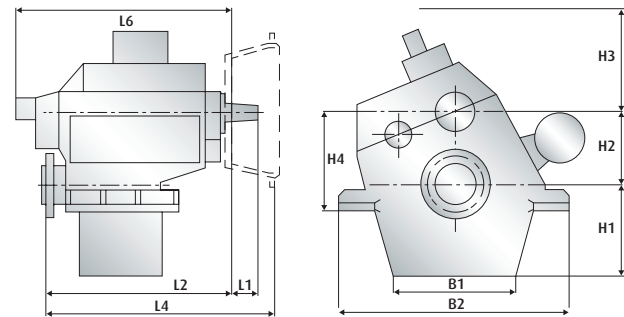
6,375; 6,950; 7,045; 7,368; 7,429

Continuous Duty

WAF/LAF* 665L – 843L

* Reduction gearbox type AF without clutch available on request.

Available as horizontally offset configuration on request.



Main Dimensions mm (Vertically offset configuration)

Model	Mounting brackets included	B1	B2	H1	H2	H3	H4	L1	L2	L4 SAE 1	L4 SAE 0	L4 SAE 00	L6
WAF 665L	•	430	1160	490	430	540	560	101	881	-	1042	1042	1200
WAF 675L	•	650	1480	610	550	540	680	101	892	-	1053	1053	1200
WAF 743L	•	610	1160	490	380	550	510	107	933	-	-	1142	1190
WAF 763L	•	680	1300	530	490	550	630	107	934	-	-	1143	1190
WAF 773L	•	790	1670	680	620	550	760	107	951	-	-	-	1190
WAF 843L	•	680	1300	530	425	550	565	123	970	-	-	-	1280

C

1200 rpm

1600 rpm

1800 rpm

WEIGHT

RATIOS

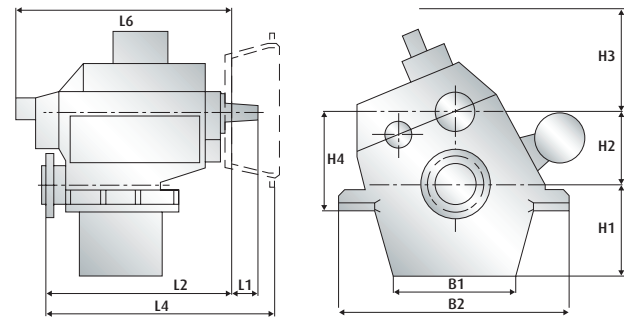
kw/rpm	BHP	(KW)	BHP	(KW)	BHP	(KW)	kg	(lbs)	# = special reduction ratio
WAF 665L									
0,70	1126	(840)	1501	(1120)	1688	(1260)	1950	(4290)	3,536; 4,080; 4,560#; 5,044; 5,571; 5,950
WAF 675L									
0,70	1126	(840)	1501	(1120)	1688	(1260)	2600	(5720)	6,417#; 7,091; 7,476#
WAF 743L									
0,88	1415	(1056)	1887	(1408)	2123	(1584)	1800	(3960)	2,467#; 3,038; 3,550; 3,952
WAF 763L									
0,88	1415	(1056)	1887	(1408)	2123	(1584)	2300	(5060)	4,625; 5,136; 5,429#; 5,750
WAF 773L									
0,88	1415	(1056)	1887	(1408)	2123	(1584)	3200	(7040)	6,154#; 6,440#; 7,087; 7,454
WAF 843L									
1,25	2010	(1500)	2680	(2000)	3015	(2250)	2300	(5060)	2,091#; 2,517#; 3,080; 3,500
1,15	1849	(1380)	2466	(1840)	2774	(2070)	2300	(5060)	3,905

Continuous Duty

WAF/LAF* 863L – 1163L

* Reduction gearbox type AF without clutch available on request.

Available as horizontally offset configuration on request.



Main Dimensions mm (Vertically offset configuration)

Model	Mounting brackets included	B1	B2	H1	H2	H3	H4	L1	L2	L4 SAE 1	L4 SAE 0	L4 SAE 00	L6
WAF 863L	•	705	1400	590	540	550	690	123	1000	-	-	-	1280
WAF 873L	•	860	1650	750	670	550	710	123	1030	-	-	-	1280
WAF 1143L	•	705	1400	590	450	650	600	142	1053	-	-	-	1368
WAF 1163L	•	855	1520	660	590	650	750	142	1085	-	-	-	1368

C

1200 rpm

1600 rpm

1800 rpm

WEIGHT

RATIOS

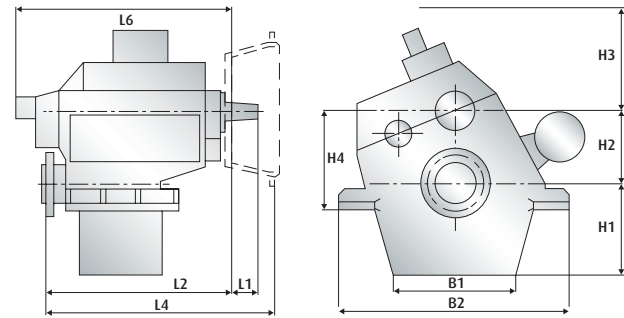
kW/rpm	BHP	(KW)	BHP	(KW)	BHP	(KW)	kg	(lbs)	# = special reduction ratio
WAF 863L									
1,25	2010	(1500)	2680	(2000)	3015	(2250)	3100	(6820)	4,038#; 4,458#; 4,954
1,15	1849	(1380)	2466	(1840)	2774	(2070)	3100	(6820)	5,500#; 5,842
WAF 873L									
1,25	2010	(1500)	2680	(2000)	3015	(2250)	4100	(9020)	6,154#; 6,440#; 7,087
1,15	1849	(1380)	2466	(1840)	2774	(2070)	4100	(9020)	7,454
WAF 1143L									
1,48	2380	(1776)	3173	(2368)	3570	(2664)	2750	(6050)	1,966#; 2,429#; 3,037; 3,500#
1,45	2332	(1740)	3109	(2320)	3497	(2610)	2750	(6050)	3,909
WAF 1163L									
1,48	2380	(1776)	3173	(2368)	3570	(2664)	3600	(7920)	4,500#; 4,958; 5,500#
1,27	2042	(1524)	2723	(2032)	3063	(2286)	3600	(7920)	5,810#

Continuous Duty

WAF/LAF* 1173L – 1563L

* Reduction gearbox type AF without clutch available on request.

Available as horizontally offset configuration on request.



Main Dimensions mm (Vertically offset configuration)

Model	Mounting brackets included	B1	B2	H1	H2	H3	H4	L1	L2	L4 SAE 1	L4 SAE 0	L4 SAE 00	L6
WAF 1173L	•									on request			
WAF 1543L	•	855	1520	660	490	650	650	154	1133	-	-	-	1413
WAF 1563L	•	925	1620	675	630	650	790	154	1163	-	-	-	1413

C

1200 rpm

1600 rpm

1800 rpm

WEIGHT

RATIOS

kW/rpm

BHP

(KW)

BHP

(KW)

BHP

(KW)

kg

(lbs)

= special reduction ratio

WAF 1173L

1,48

2380

(1776)

3173

(2368)

3570

(2664)

5000

(11000)

6,080; 6,696#; 7,046

1,27

2042

(1524)

2723

(2032)

3063

(2286)

5000

(11000)

7,429

C

1200 rpm

1300 rpm

1600 rpm

WEIGHT

RATIOS

kW/rpm

BHP

(KW)

BHP

(KW)

BHP

(KW)

kg

(lbs)

= special reduction ratio

WAF 1543L

1,85

2975

(2220)

3223

(2405)

3966

(2960)

3400

(7480)

2,032#; 2,467#; 3,038; 3,522#; 3,857

WAF 1563L

1,85

2975

(2220)

3223

(2405)

3966

(2960)

4460

(9812)

4,429#; 4,846

1,73

2775

(2071)

3007

(2244)

3701

(2762)

4460

(9812)

5,444#

1,70

2734

(2040)

2961

(2210)

3645

(2720)

4460

(9812)

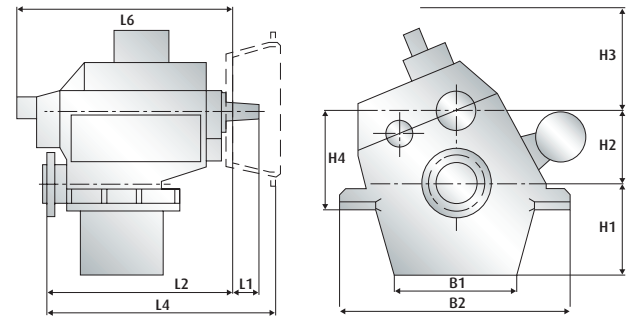
5,954

Continuous Duty

WAF/LAF* 1943L – 1973L

* Reduction gearbox type AF without clutch available on request.

Available as horizontally offset configuration on request.



Main Dimensions mm (Vertically offset configuration)

Model	Mounting brackets included	B1	B2	H1	H2	H3	H4	L1	L2	L4 SAE 1	L4 SAE 0	L4 SAE 00	L6
WAF 1943L	•	925	1620	675	485	600	645	162	1261	-	-	-	1556
WAF 1963L	•	970	1680	720	675	600	845	162	1281	-	-	-	1556
WAF 1973L	•	1000	2210	865	820	700	970	162	1347	-	-	-	1700

C

1200 rpm

1300 rpm

1600 rpm

WEIGHT

RATIOS

kW/rpm

BHP

(KW)

BHP

(KW)

BHP

(KW)

kg

(lbs)

= special reduction ratio

WAF 1943L

2,00

3216

(2400)

3484

(2600)

4288

(3200)

4460

(9812)

2,059#; 2,467#; 2,962; 3,522#; 3,952

WAF 1963L

2,00

3216

(2400)

3484

(2600)

4288

(3200)

5540

(12188)

4,467#; 5,074; 5,560#; 5,952

WAF 1973L

2,00

3216

(2400)

3484

(2600)

4288

(3200)

8500

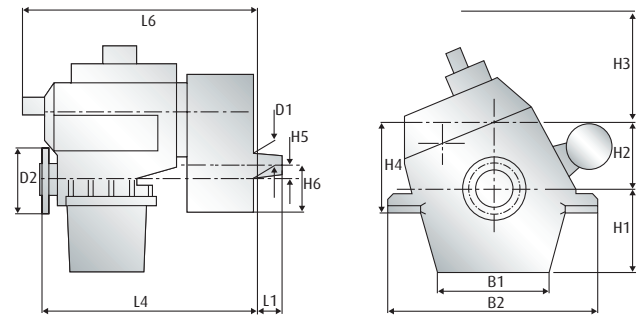
(18700)

6,375; 6,950; 7,045; 7,368; 7,429

Continuous Duty

WGF 665 – 1973

Partly vertical offset. Further sizes on request.
Also available as LGF-model without reverse step.



Main Dimensions mm

Model	B1	B2	D1	D2	H1	H2	H3	H4	H5	H6	L1	L2	L6	Weight (kg)
WGF 665	430	1160	102	420	490	430	590	560	155	270	117	1255	1600	2360
WGF 763	680	1300	107	375	530	490	550	630	180	270	142	1333	1700	2800
WGF 863	705	1400	117	420	590	540	550	690	180	320	154	1443	1800	3720

WGF 665

Reduction ratios	Power/speed ratios without survey	Input speed up to (min ⁻¹)
3,076	1,35	1000
4,956	0,84	1600
7,140	0,58	1800
10,413	0,40	1800

WGF 763

Reduction ratios	Power/speed ratios without survey	Input speed up to (min ⁻¹)
2,418	1,68	1000
3,007	1,68	1000
3,582	1,41	1200
3,898	1,30	1300
4,789	1,05	1600
4,991	1,01	1600
5,410	0,93	1800
6,095	0,83	1800
6,900	0,73	1800
7,899	0,57	1800
8,844	0,57	1800

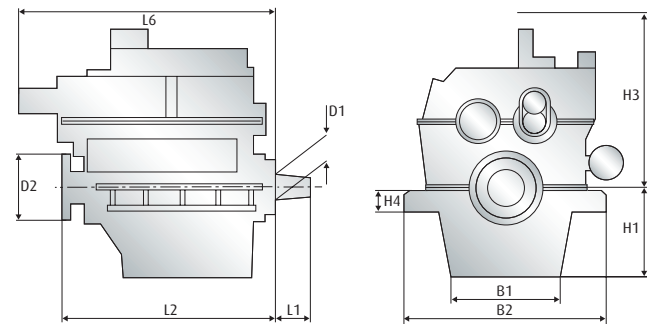
WGF 863

Reduction ratios	Power/speed ratios without survey	Input speed up to (min ⁻¹)
2,512	2,27	900
3,347	2,00	1000
3,925	1,71	1200
4,235	1,59	1300
4,509	1,26	1600
5,319	1,26	1600
5,947	1,13	1800
6,414	1,05	1800
6,914	0,97	1800
7,665	0,74	1800
9,038	0,74	1800

Continuous Duty

WGV 482

Coaxial. Reduction and power speed ratio on request.



Main Dimensions mm

Model	B1	B2	D1	D2	H1	H3	H4	L1	L2	L6	Weight (kg)
WGV 482	740	1370	147	440	610	1120	160	183	1480	1860	5600

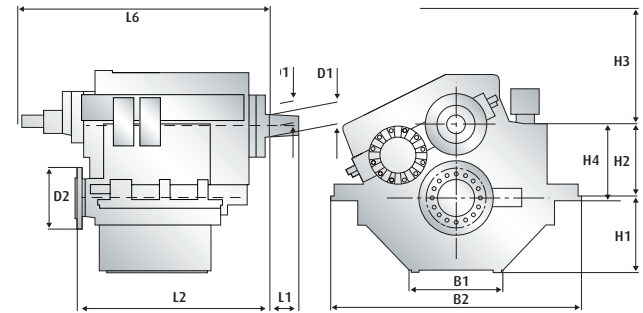
Pleasure Duty

WVS/WLS 730/1L – 930/1L

Light weight gearbox. Input and output on opposite sides.



Product brochure



Main Dimensions mm (Vertically offset configuration)

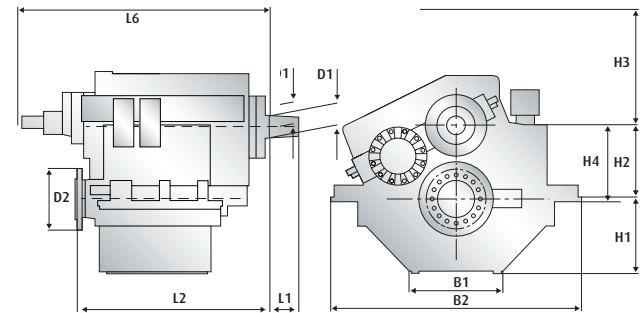
Model	Mounting brackets included	B1	B2	H1	H2	H3	H4	L1	L2	L4 SAE 1	L4 SAE 0	L4 SAE 00	L6
WVS 730/1L	•	650	1036	323	310	540	340	110	795	-	-	-	965
WVS 930/1L	•	750	1166	348	340	560	385	120	845	-	-	-	1024

P	1900 rpm		2100 rpm		2300 rpm		WEIGHT		RATIOS
	kW/rpm	BHP (KW)	BHP (KW)	BHP (KW)	BHP (KW)	kg	(lbs)	# = special reduction ratio	
WVS 730/1L									
0,70	1782	(1330)	1970	(1470)	2157	(1610)	720	(1584)	1,538; 2,036; 2,542; 3,048
0,67	1706	(1273)	1885	(1407)	2065	(1541)	720	(1584)	3,542#
0,60	1528	(1140)	1688	(1260)	1849	(1380)	720	(1584)	3,954#
WVS 930/1L									
1,00	2546	(1900)	2814	(2100)	3082	(2300)	925	(2035)	1,381#; 2,032; 2,482; 3,044
0,93	2368	(1767)	2617	(1953)	2866	(2139)	925	(2035)	3,542#
0,83	2113	(1577)	2336	(1743)	2558	(1909)	925	(2035)	3,954#

Pleasure Duty

WVS 1130L

Light weight gearbox. Input and output on opposite sides.



Main Dimensions mm (Vertically offset configuration)

Model	Mounting brackets included	B1	B2	H1	H2	H3	H4	L1	L2	L4 SAE 1	L4 SAE 0	L4 SAE 00	L6
WVS 1130L	•	700	1350	435	425	650	440	157	1085	-	-	-	1255

P

1600 rpm

1800 rpm

1950 rpm

WEIGHT

RATIOS

kW/rpm

BHP

(KW)

BHP

(KW)

BHP

(KW)

kg

(lbs)

= special reduction ratio

WVS 1130L

1,60

3430

(2560)

3859

(2880)

4181

(3120)

1550

(3410)

1,512; 2,029; 2,433; 2,962; 3,478#

1,30

2787

(2080)

3136

(2340)

3397

(2535)

1550

(3410)

3,905#

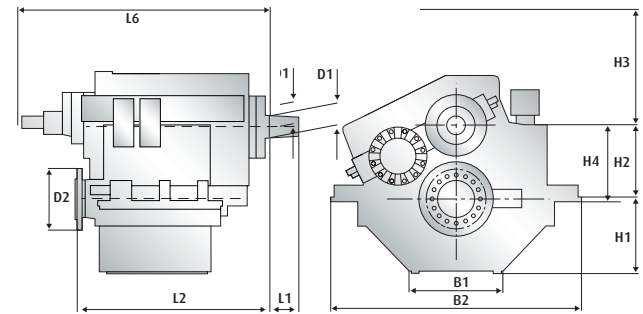
Pleasure Duty

WVS 730/1 – 930/1

Light weight gearbox. Input and output on opposite sides.



Product brochure



Main Dimensions mm (Vertically offset configuration)

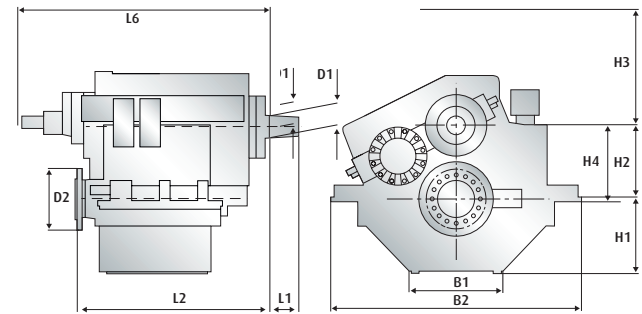
Model	Mounting brackets included	B1	B2	H1	H2	H3	H4	L1	L2	L4 SAE 1	L4 SAE 0	L4 SAE 00	L6
WVS 730/1	•	650	1036	323	310	540	340	110	795	-	-	-	965
WVS 930/1	•	750	1166	348	340	560	385	120	845	-	-	-	1024

P	1900 rpm		2100 rpm		2300 rpm		WEIGHT		RATIOS
	kW/rpm	BHP (KW)	BHP (KW)	BHP (KW)	BHP (KW)	kg	(lbs)	# = special reduction ratio	
WVS 730/1									
0,95	2419	(1805)	2673	(1995)	2928	(2185)	725	(1595)	1,390#; 1,538; 2,036; 2,542; 3,048
0,67	1706	(1273)	1885	(1407)	2065	(1541)	725	(1595)	3,542#
0,60	1528	(1140)	1688	(1260)	1849	(1380)	725	(1595)	3,954#
WVS 930/1									
1,34	3412	(2546)	3771	(2814)	4130	(3082)	950	(2090)	1,381#; 1,525; 2,032; 2,482
1,22	3106	(2318)	3433	(2562)	3760	(2806)	950	(2090)	3,044
1,10	2793	(2084)	3087	(2304)	3381	(2523)	950	(2090)	3,542#
0,83	2113	(1577)	2336	(1743)	2558	(1909)	950	(2090)	3,954#

Pleasure Duty

WVS/WLS 1130 – 2240

Light weight gearbox. Input and output on opposite sides.



Main Dimensions mm (Vertically offset configuration)

Model	Mounting brackets included	B1	B2	H1	H2	H3	H4	L1	L2	L4 SAE 1	L4 SAE 0	L4 SAE 00	L6
WVS 1130	•	700	1350	435	425	650	440	157	1085	-	-	-	1255
WVS 1540	•	650	1300	390	390	700	405	142	952	-	-	-	1375
WVS 1930	•	500	1340	400	390	650	405	154	1032	-	-	-	1300
WVS 2230	•	700	1500	500	460	550	475	162	1180	-	-	-	1480
WVS 2240	•	700	1500	500	460	550	475	162	1180	-	-	-	1480

P kW/rpm	1600 rpm		1800 rpm		1950 rpm		WEIGHT		RATIOS
	BHP	(KW)	BHP	(KW)	BHP	(KW)	kg	(lbs)	# = special reduction ratio
WVS 1130									
1,90	4074	(3040)	4583	(3420)	4965	(3705)	1600	(3520)	1,452#; 1,512; 2,029; 2,433
1,85	3966	(2960)	4462	(3330)	4834	(3608)	1600	(3520)	2,962
1,70	3645	(2720)	4100	(3060)	4442	(3315)	1600	(3520)	3,478#
1,55	3323	(2480)	3739	(2790)	4050	(3022)	1600	(3520)	3,905
WVS 2230									
2,51	5381	(4016)	6054	(4518)	6559	(4894)	2150	(4730)	1,415#; 1,513; 2,094; 2,414#; 2,536; 2,920#
WVS 2240									
2,51	5381	(4016)	6054	(4518)	6559	(4894)	2185	(4807)	3,083; 3,261#; 3,455
2,45	5253	(3920)	5909	(4410)	6402	(4778)	2185	(4807)	3,667#
2,00	4288	(3200)	4824	(3600)	5226	(3900)	2185	(4807)	3,826

Pleasure Duty

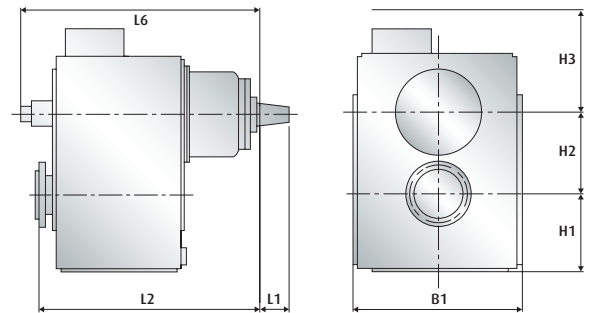
VLJ 730/1 – 930/1

Reduction gearbox with hydraulically operated clutch for waterjet application.

Available as horizontally offset configuration on request. Further sizes on request.



Product brochure



Main Dimensions mm (Vertically offset configuration)

Model	B1	B2	H1	H2	H3	L1	L2	L4 SAE 1	L4 SAE 0	L4 SAE 00	L6
VLJ 730/1	640	-	325	310	480	110	795	-	-	-	1000
VLJ 930/1	720	-	350	340	500	120	870	-	-	-	1125

P kW/rpm	1600 rpm		1800 rpm		2100 rpm		WEIGHT		RATIOS
	BHP	(KW)	BHP	(KW)	BHP	(KW)	kg	(lbs)	# = special reduction ratio
VLJ 730/1									
0,95	2037	(1520)	2291	(1710)	2673	(1995)	560	(1232)	1,083; 1,429; 1,539; 2,036; 2,542; 3,048
VLJ 930/1									
1,29	2766	(2064)	3111	(2322)	3630	(2709)	740	(1628)	1,186; 1,381; 1,525; 2,032; 2,482
1,22	2616	(1952)	2943	(2196)	3433	(2562)	740	(1628)	3,044

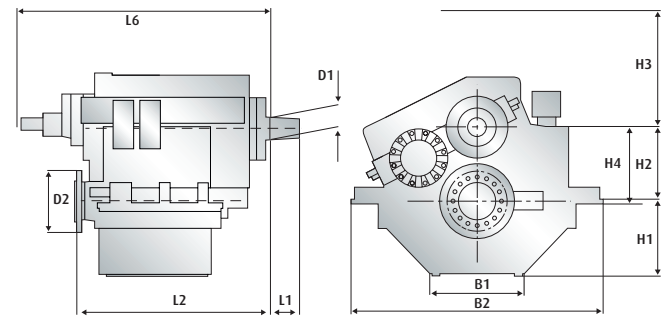
Light Duty

WVS/WLS 730/1L – 930/1L

Light weight gearbox. Input and output on opposite sides.



Product brochure



Main Dimensions mm (Vertically offset configuration)

Model	Mounting brackets included	B1	B2	H1	H2	H3	H4	L1	L2	L4 SAE 1	L4 SAE 0	L4 SAE 00	L6
WVS 730/1L	•	650	1036	323	310	540	340	110	795	-	-	-	965
WVS 930/1L	•	750	1166	348	340	560	385	120	845	-	-	-	1024

L

1600 rpm

1800 rpm

2100 rpm

WEIGHT

RATIOS

kW/rpm	BHP	(KW)	BHP	(KW)	BHP	(KW)	kg	(lbs)	# = special reduction ratio
WVS 730/1L									
0,70	1501	(1120)	1688	(1260)	1970	(1470)	720	(1584)	1,538; 2,036; 2,542; 3,048
0,67	1436	(1072)	1616	(1206)	1885	(1407)	720	(1584)	3,542#
0,60	1286	(960)	1447	(1080)	1688	(1260)	720	(1584)	3,954#
WVS 930/1L									
1,00	2144	(1600)	2412	(1800)	2814	(2100)	925	(2035)	1,381#; 2,032; 2,482; 3,044
0,93	1994	(1488)	2243	(1674)	2617	(1953)	925	(2035)	3,542#
0,83	1780	(1328)	2002	(1494)	2336	(1743)	925	(2035)	3,954#

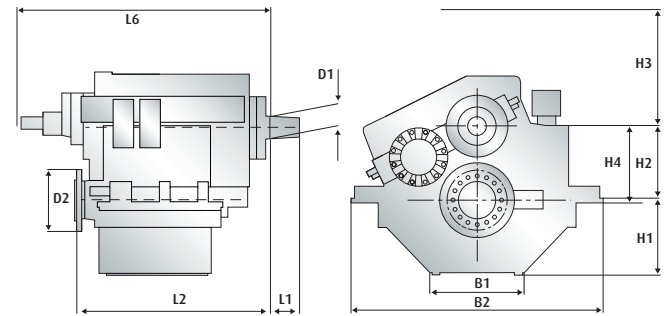
Light Duty

WVS/WLS 1130L

Light weight gearbox. Input and output on opposite sides.



Product brochure



Main Dimensions mm (Vertically offset configuration)

Model	Mounting brackets included	B1	B2	H1	H2	H3	H4	L1	L2	L4 SAE 1	L4 SAE 0	L4 SAE 00	L6
WVS 1130L	•	700	1350	435	425	650	440	157	1085	-	-	-	1255

L

1600 rpm

1800 rpm

1950 rpm

WEIGHT

RATIOS

kW/rpm

BHP

(KW)

BHP

(KW)

BHP

(KW)

kg

(lbs)

= special reduction ratio

WVS 1130L

1,60	3430	(2560)	3859	(2880)	4181	(3120)	1550	(3410)	1,512; 2,029; 2,433; 2,962; 3,478#
1,30	2787	(2080)	3136	(2340)	3397	(2535)	1550	(3410)	3,905#

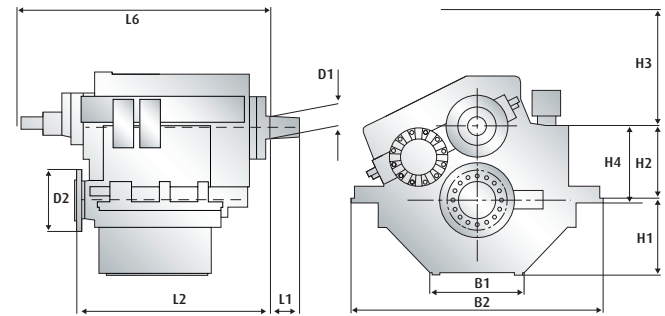
Light Duty

WVS/WLS 730/1 – 930/1

Light weight gearbox. Input and output on opposite sides.



Product brochure



Main Dimensions mm (Vertically offset configuration)

Model	Mounting brackets included	B1	B2	H1	H2	H3	H4	L1	L2	L4 SAE 1	L4 SAE 0	L4 SAE 00	L6
WVS 730/1	•	650	1036	323	310	540	340	110	795	-	-	-	965
WVS 930/1	•	750	1166	348	340	560	385	120	845	-	-	-	1024

L

1600 rpm

1800 rpm

2100 rpm

WEIGHT

RATIOS

kW/rpm

BHP

(KW)

BHP

(KW)

BHP

(KW)

kg

(lbs)

= special reduction ratio

WVS 730/1

0,92	1972	(1472)	2219	(1656)	2589	(1932)	725	(1595)	1,390#; 1,538; 2,036; 2,542
0,87	1865	(1392)	2098	(1566)	2448	(1827)	725	(1595)	3,048
0,67	1436	(1072)	1616	(1206)	1885	(1407)	725	(1595)	3,542#
0,60	1286	(960)	1447	(1080)	1688	(1260)	725	(1595)	3,954#

WVS 930/1

1,28	2744	(2048)	3087	(2304)	3602	(2688)	950	(2090)	1,381#; 1,525; 2,032; 2,482
1,22	2616	(1952)	2943	(2196)	3433	(2562)	950	(2090)	3,044
1,10	2352	(1755)	2646	(1975)	3087	(2304)	950	(2090)	3,542#
0,83	1780	(1328)	2002	(1494)	2336	(1743)	950	(2090)	3,954#

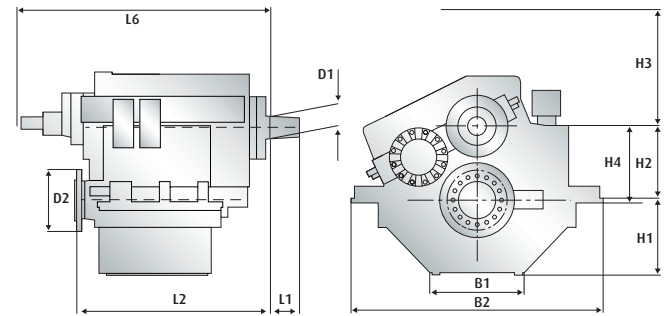
Light Duty

WVS/WLS 1130 – 1930

Light weight gearbox. Input and output on opposite sides.



Product brochure



Main Dimensions mm (Vertically offset configuration)

Model	Mounting brackets included	B1	B2	H1	H2	H3	H4	L1	L2	L4 SAE 1	L4 SAE 0	L4 SAE 00	L6
WVS 1130	•	700	1350	435	425	650	440	157	1085	-	-	-	1255
WVS 1540	•	650	1300	390	390	700	405	142	952	-	-	-	1375
WVS 1930	•	500	1340	400	390	650	405	154	1032	-	-	-	1300

L

1600 rpm

1800 rpm

1950 rpm

WEIGHT

RATIOS

kW/rpm	BHP	(KW)	BHP	(KW)	BHP	(KW)	kg	(lbs)	# = special reduction ratio
WVS 1130									
1,85	3966	(2960)	4462	(3330)	4834	(3608)	1600	(3520)	1,452#; 1,512; 2,029; 2,433; 2,962
1,70	3645	(2720)	4100	(3060)	4442	(3315)	1600	(3520)	3,478#
1,55	3323	(2480)	3739	(2790)	4050	(3022)	1600	(3520)	3,905
WVS 1540									
1,50	3216	(2400)	3618	(2700)	3920	(2925)	1450	(3190)	2,952; 3,150#; 3,368#; 3,476; 3,700#
1,45	3113	(2323)	3502	(2614)	3794	(2831)	1450	(3190)	3,947
1,36	2909	(2171)	3273	(2443)	3546	(2646)	1450	(3190)	4,350#
1,29	2755	(2056)	3099	(2313)	3358	(2506)	1450	(3190)	4,632
WVS 1930									
1,85	3966	(2960)	4462	(3330)	4834	(3608)	1550	(3410)	1,410#; 2,032; 2,458; 2,952
1,70	3645	(2720)	4100	(3060)	4442	(3315)	1550	(3410)	3,368#
1,67	3580	(2672)	4028	(3006)	4364	(3256)	1550	(3410)	3,476#
1,48	3181	(2374)	3578	(2670)	3877	(2893)	1550	(3410)	3,864#

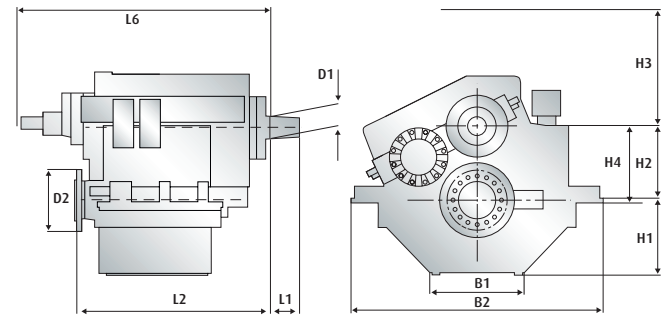
Light Duty

WVS 2230 – 2240

Light weight gearbox. Input and output on opposite sides.



Product brochure



Main Dimensions mm (Vertically offset configuration)

Model	Mounting brackets included	B1	B2	H1	H2	H3	H4	L1	L2	L4 SAE 1	L4 SAE 0	L4 SAE 00	L6
WVS 2230	•	700	1500	500	460	550	475	162	1180	-	-	-	1480
WVS 2240	•	700	1500	500	460	550	475	162	1180	-	-	-	1480

L

1600 rpm

1800 rpm

1950 rpm

WEIGHT

RATIOS

kW/rpm

BHP

(KW)

BHP

(KW)

BHP

(KW)

kg

(lbs)

= special reduction ratio

WVS 2230

2,45

5253

(3920)

5909

(4410)

6402

(4778)

2150

(4730)

1,415#; 1,513; 2,094; 2,414#; 2,536; 2,920#

WVS 2240

2,45

5253

(3920)

5909

(4410)

6402

(4778)

2185

(4807)

3,083; 3,261#; 3,455; 3,667#

2,00

4288

(3200)

4824

(3600)

5226

(3900)

2185

(4807)

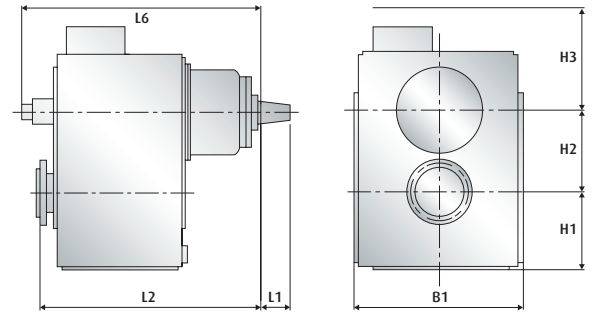
3,826

Light Duty

VLJ 730/1 – 930/1

Reduction gearbox with hydraulically operated clutch for waterjet application.

Available as horizontally offset configuration on request. Further sizes on request.



Main Dimensions mm (Vertically offset configuration)

Model	B1	B2	H1	H2	H3	L1	L2	L4 SAE 1	L4 SAE 0	L4 SAE 00	L6
VLJ 730/1	640	-	325	310	480	110	795	-	-	-	1000
VLJ 930/1	720	-	350	340	500	120	870	-	-	-	1125

L

1600 rpm

1800 rpm

2100 rpm

WEIGHT

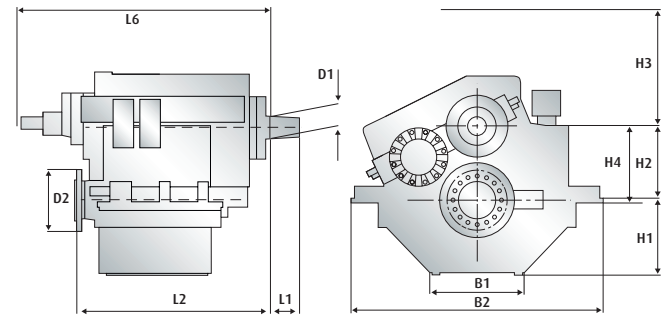
RATIOS

kW/rpm	BHP	(KW)	BHP	(KW)	BHP	(KW)	kg	(lbs)	# = special reduction ratio
VLJ 730/1									
0,92	1972	(1472)	2219	(1656)	2589	(1932)	560	(1232)	1,083; 1,429; 1,539; 2,036; 2,542
0,84	1801	(1344)	2026	(1512)	2364	(1764)	560	(1232)	3,048
VLJ 930/1									
1,26	2701	(2016)	3039	(2268)	3546	(2646)	740	(1628)	1,186; 1,381; 1,525; 2,032
1,22	2616	(1952)	2943	(2196)	3433	(2562)	740	(1628)	2,482
1,05	2251	(1680)	2533	(1890)	2955	(2205)	740	(1628)	3,044

Medium Duty

WVS/WLS 730/1L – 930/1L

Light weight gearbox. Input and output on opposite sides.



Main Dimensions mm (Vertically offset configuration)

Model	Mounting brackets included	B1	B2	H1	H2	H3	H4	L1	L2	L4 SAE 1	L4 SAE 0	L4 SAE 00	L6
WVS 730/1L	•	650	1036	323	310	540	340	110	795	-	-	-	965
WVS 930/1L	•	750	1166	348	340	560	385	120	845	-	-	-	1024

kW/rpm	1600 rpm		1800 rpm		2100 rpm		WEIGHT		RATIOS
	BHP	(KW)	BHP	(KW)	BHP	(KW)	kg	(lbs)	# = special reduction ratio
WVS 730/1L									
0,70	1501	(1120)	1688	(1260)	1970	(1470)	720	(1584)	1,538; 2,036; 2,542; 3,048
0,60	1286	(960)	1447	(1080)	1688	(1260)	720	(1584)	3,542#
0,55	1179	(880)	1327	(990)	1548	(1155)	720	(1584)	3,954#
WVS 930/1L									
1,00	2144	(1600)	2412	(1800)	2814	(2100)	925	(2035)	1,381#; 2,032; 2,482
0,98	2101	(1568)	2364	(1764)	2758	(2058)	925	(2035)	3,044
0,87	1865	(1392)	2098	(1566)	2448	(1827)	925	(2035)	3,542#
0,75	1608	(1200)	1809	(1350)	2110	(1575)	925	(2035)	3,954#

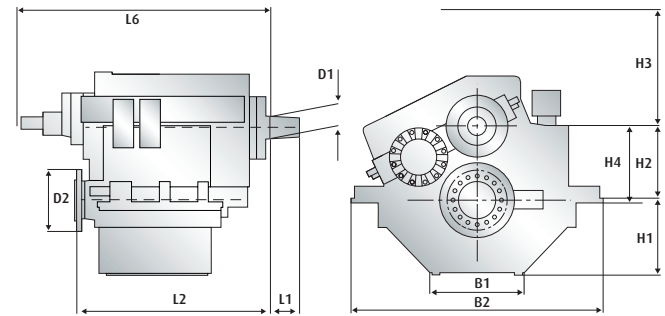
Medium Duty

WVS/WLS 1130L

Light weight gearbox. Input and output on opposite sides.



Product brochure



Main Dimensions mm (Vertically offset configuration)

Model	Mounting brackets included	B1	B2	H1	H2	H3	H4	L1	L2	L4 SAE 1	L4 SAE 0	L4 SAE 00	L6
WVS 1130L	•	700	1350	435	425	650	440	157	1085	-	-	-	1255

kW/rpm	1500 rpm		1600 rpm		1800 rpm		WEIGHT		RATIOS
	BHP	(KW)	BHP	(KW)	BHP	(KW)	kg	(lbs)	# = special reduction ratio
WVS 1130L									
1,60	3216	(2400)	3430	(2560)	3859	(2880)	1550	(3410)	1,512; 2,029; 2,433; 2,962
1,45	2914	(2175)	3109	(2320)	3497	(2610)	1550	(3410)	3,478#
1,25	2512	(1875)	2680	(2000)	3015	(2250)	1550	(3410)	3,905#

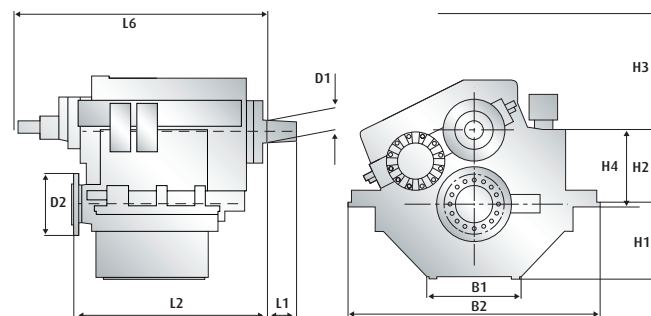
Medium Duty

WVS/WLS 730/1 – 930/1

Light weight gearbox. Input and output on opposite sides.



Product brochure



Main Dimensions mm (Vertically offset configuration)

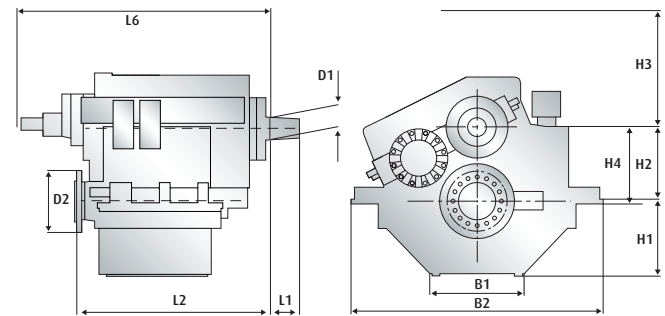
Model	Mounting brackets included	B1	B2	H1	H2	H3	H4	L1	L2	L4 SAE 1	L4 SAE 0	L4 SAE 00	L6
WVS 730/1	•	650	1036	323	310	540	340	110	795	-	-	-	965
WVS 930/1	•	750	1166	348	340	560	385	120	845	-	-	-	1024

kW/rpm	1600 rpm		1800 rpm		2100 rpm		WEIGHT		RATIOS
	BHP	(KW)	BHP	(KW)	BHP	(KW)	kg	(lbs)	# = special reduction ratio
WVS 730/1									
0,85	1822	(1360)	2050	(1530)	2392	(1785)	725	(1595)	1,390#; 1,538; 2,036; 2,542
0,80	1715	(1280)	1930	(1440)	2251	(1680)	725	(1595)	3,048
0,64	1372	(1024)	1544	(1152)	1801	(1344)	725	(1595)	3,542#
0,60	1286	(960)	1447	(1080)	1688	(1260)	725	(1595)	3,954#
WVS 930/1									
1,20	2573	(1920)	2894	(2160)	3377	(2520)	950	(2090)	1,381#; 1,525; 2,032; 2,482
1,10	2358	(1760)	2653	(1980)	3095	(2310)	950	(2090)	3,044
0,97	2080	(1552)	2340	(1746)	2730	(2037)	950	(2090)	3,542#
0,80	1715	(1280)	1930	(1440)	2251	(1680)	950	(2090)	3,954#

Medium Duty

WVS/WLS 1130 – 1930

Light weight gearbox. Input and output on opposite sides.



Main Dimensions mm (Vertically offset configuration)

Model	Mounting brackets included	B1	B2	H1	H2	H3	H4	L1	L2	L4 SAE 1	L4 SAE 0	L4 SAE 00	L6
WVS 1130	•	700	1350	435	425	650	440	157	1085	-	-	-	1255
WVS 1540	•	650	1300	390	390	700	405	142	952	-	-	-	1375
WVS 1930	•	500	1340	400	390	650	405	154	1032	-	-	-	1300

M kW/rpm	1500 rpm		1600 rpm		1800 rpm		WEIGHT		RATIOS
	BHP	(KW)	BHP	(KW)	BHP	(KW)	kg	(lbs)	# = special reduction ratio
WVS 1130									
1,70	3417	(2550)	3645	(2720)	4100	(3060)	1600	(3520)	1,452#; 1,512; 2,029; 2,433; 2,962
1,62	3256	(2430)	3473	(2592)	3907	(2916)	1600	(3520)	3,478#
1,38	2774	(2070)	2959	(2208)	3329	(2484)	1600	(3520)	3,905
WVS 1540									
1,50	3015	(2250)	3216	(2400)	3618	(2700)	1450	(3190)	2,952; 3,150#; 3,368#; 3,476; 3,700#
1,45	2919	(2178)	3113	(2323)	3502	(2614)	1450	(3190)	3,947
1,36	2728	(2036)	2909	(2171)	3273	(2443)	1450	(3190)	4,350#
1,29	2583	(1927)	2755	(2056)	3099	(2313)	1450	(3190)	4,632
WVS 1930									
1,85	3719	(2775)	3966	(2960)	4462	(3330)	1550	(3410)	1,410#; 2,032; 2,458; 2,952
1,70	3417	(2550)	3645	(2720)	4100	(3060)	1550	(3410)	3,368#
1,67	3357	(2505)	3580	(2672)	4028	(3006)	1550	(3410)	3,476#
1,48	2982	(2225)	3181	(2374)	3578	(2670)	1550	(3410)	3,864#

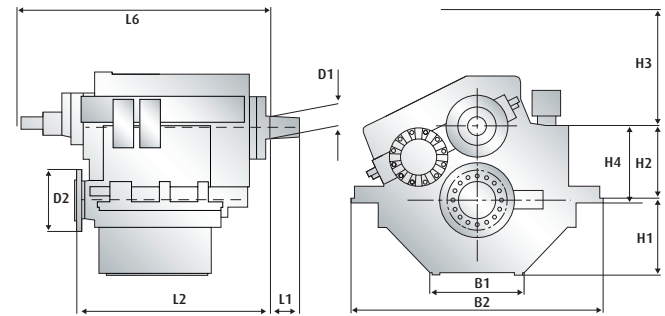
Medium Duty

WVS/WLS 2230 – 2240

Light weight gearbox. Input and output on opposite sides.



Product brochure



Main Dimensions mm (Vertically offset configuration)

Model	Mounting brackets included	B1	B2	H1	H2	H3	H4	L1	L2	L4 SAE 1	L4 SAE 0	L4 SAE 00	L6
WVS 2230	•	700	1500	500	460	550	475	162	1180	-	-	-	1480
WVS 2240	•	700	1500	500	460	550	475	162	1180	-	-	-	1480

M

1500 rpm

1600 rpm

1800 rpm

WEIGHT

RATIOS

kW/rpm

BHP

(KW)

BHP

(KW)

BHP

(KW)

kg

(lbs)

= special reduction ratio

WVS 2230

2,25

4522

(3375)

4824

(3600)

5427

(4050)

2150

(4730)

1,415#; 1,513; 2,094; 2,414#; 2,536; 2,920#

WVS 2240

2,25

4522

(3375)

4824

(3600)

5427

(4050)

2185

(4807)

3,083; 3,261#; 3,455; 3,667#

2,00

4020

(3000)

4288

(3200)

4824

(3600)

2185

(4807)

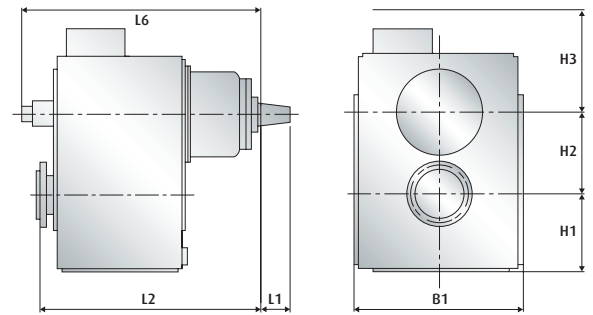
3,826

Medium Duty

VLJ 730/1 – 930/1

Reduction gearbox with hydraulically operated clutch for waterjet application.

Available as horizontally offset configuration on request. Further sizes on request.



Main Dimensions mm (Vertically offset configuration)

Model	B1	B2	H1	H2	H3	L1	L2	L4 SAE 1	L4 SAE 0	L4 SAE 00	L6
VLJ 730/1	640	-	325	310	480	110	795	-	-	-	1000
VLJ 930/1	720	-	350	340	500	120	870	-	-	-	1125

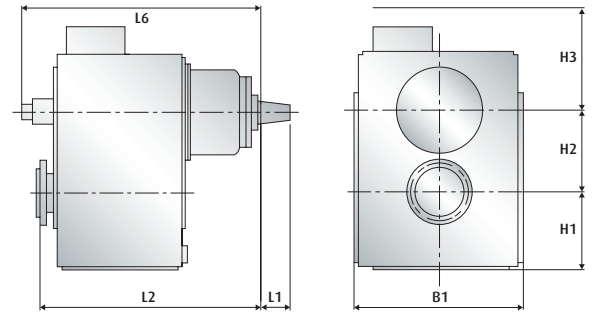
M kW/rpm	1200 rpm		1600 rpm		1800 rpm		WEIGHT		RATIOS
	BHP	(KW)	BHP	(KW)	BHP	(KW)	kg	(lbs)	# = special reduction ratio
VLJ 730/1									
0,75	1206	(900)	1608	(1200)	1809	(1350)	560	(1232)	1,083; 1,429; 1,539; 2,036; 2,542
0,71	1142	(852)	1522	(1136)	1713	(1278)	560	(1232)	3,048
VLJ 930/1									
1,10	1769	(1320)	2358	(1760)	2653	(1980)	740	(1628)	1,186; 1,381; 1,525; 2,032
1,05	1688	(1260)	2251	(1680)	2533	(1890)	740	(1628)	2,482
0,89	1431	(1068)	1908	(1424)	2147	(1602)	740	(1628)	3,044

Continuous Duty

VLJ 1130 – 2230

Reduction gearbox with hydraulically operated clutch for waterjet application.

Available as horizontally offset configuration on request. Further sizes on request.



Main Dimensions mm (Vertically offset configuration)

Model	B1	B2	H1	H2	H3	L1	L2	L4 SAE 1	L4 SAE 0	L4 SAE 00	L6
VLJ 1130	850	-	425	425	570	154	1095	-	-	-	1240
VLJ 1930	800	-	400	390	700	154	1032	-	-	-	1300
VLJ 2230	920	-	460	460	600	162	1150	-	-	-	1300

C

1000 rpm

1200 rpm

1950 rpm

WEIGHT

RATIOS

kW/rpm	1000 rpm		1200 rpm		1950 rpm		WEIGHT		RATIOS
	BHP	(KW)	BHP	(KW)	BHP	(KW)	kg	(lbs)	# = special reduction ratio
VLJ 1130	-> standard engine operating up to 5000 hours/year								
1,85	2479	(1850)	2975	(2220)	4834	(3608)	1300	(2860)	1,512; 2,029; 2,433
1,78	2385	(1780)	2862	(2136)	4651	(3471)	1300	(2860)	2,962
VLJ 1930	-> standard engine operating up to 5000 hours/year								
2,00	2680	(2000)	3216	(2400)	5226	(3900)	1150	(2530)	1,410#; 2,032
1,85	2479	(1850)	2975	(2220)	4834	(3608)	1150	(2530)	2,458; 2,952; 3,368#
VLJ 2230	-> standard engine operating up to 5000 hours/year								
2,45	3283	(2450)	3940	(2940)	6402	(4778)	1600	(3520)	1,513; 2,094; 2,414
2,30	3082	(2300)	3698	(2760)	6010	(4485)	1600	(3520)	2,920